



Terminal Concept Design 2019.10







Terminal Concept Design Option History

2017

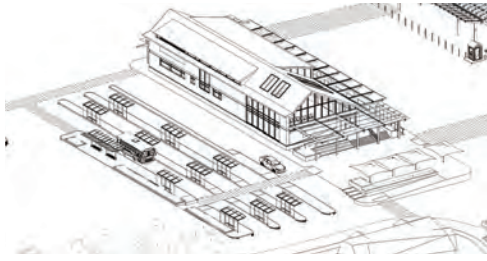


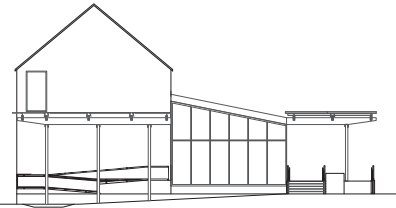
VERSION	DESCRIPTION	
2017.1	Flat Roof with 40' Open Pergola June	
2017.2	Shed Roof with 40' Plaza Cover June	
2017.3	Saltbox - 40' Plaza Cover (60' Cover Alternate) June	
2017.4	Saltbox - 40' Open Pergola June	
2017.5	Saltbox - 40' Sloped Canopy June	

2017 - 2018

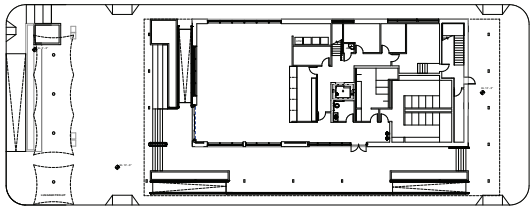



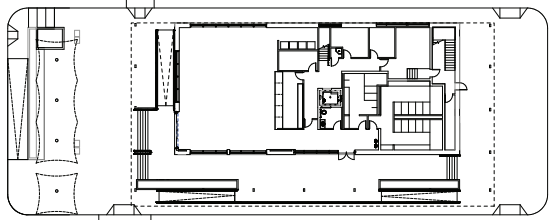
VERSION	DESCRIPTION	
2017.6	Saltbox with Roof Extension over Plaza 2 & 3 Bay Versions December - April 2018	
2017.7	Saltbox with Glass Roof over Plaza 2 & 3 Bay Versions December - April 2018	
2017.8	Saltbox with Flat Pergola over Plaza 2 & 3 Bay Versions December - April 2018	
2017.9	Saltbox with Canopies over Plaza 2 & 3 Bay Versions December - April 2018	

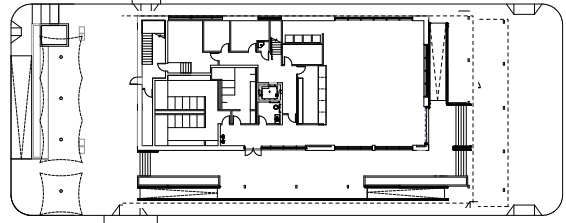




Terminal Concept Design Option History

2018

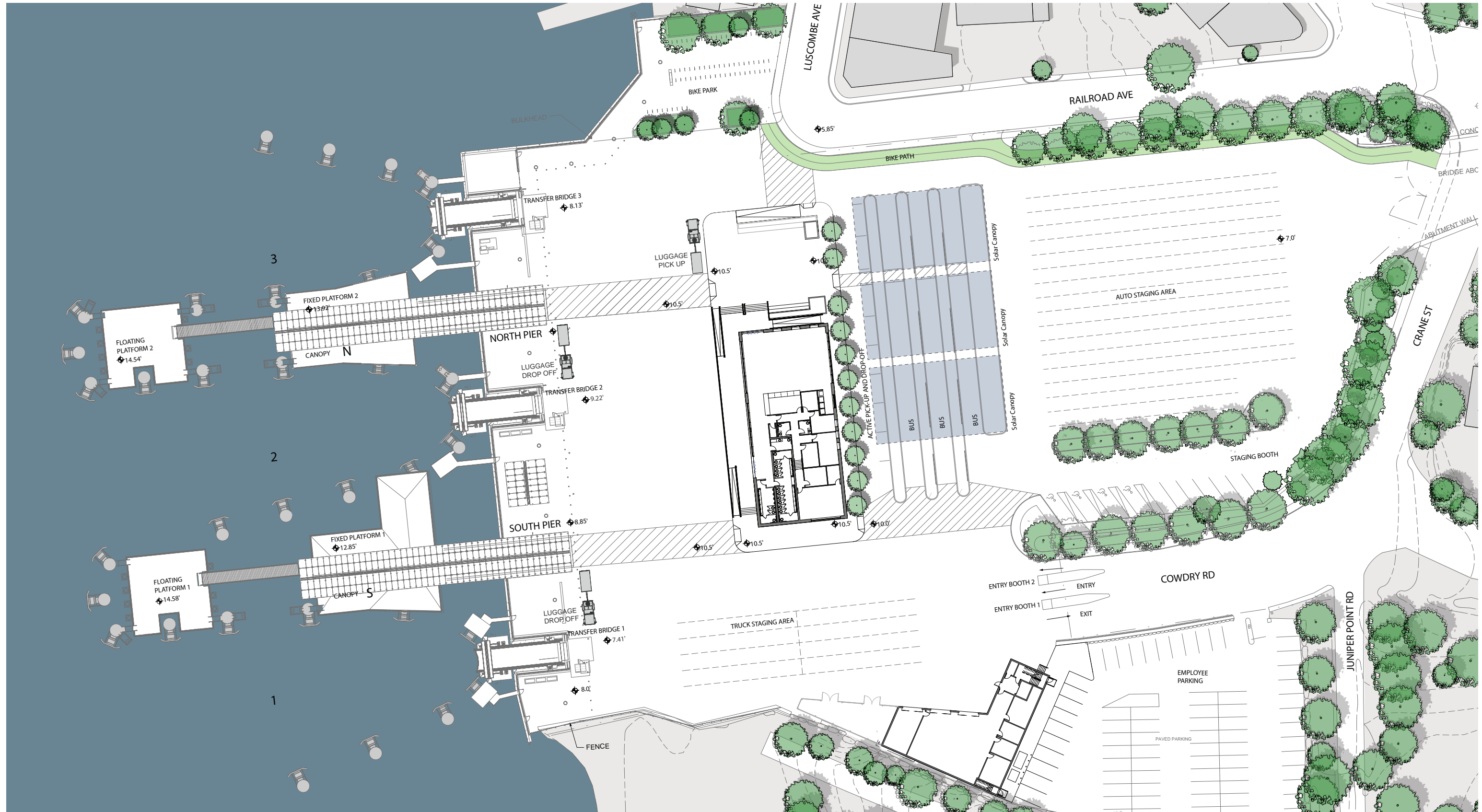
VERSION	DESCRIPTION	
2018.1	Saltbox with Flat Glass Pergola on 3 Sides Umbrellas Added to Plaza August -October	
2018.2	2 Story Flattened Saltbox, Ridge 5' Lower, Both 123' and 113' L Versions November - December	
2018.3	3 Story Tower, Reduced to 113' L December	
2018.4	2 Story Gable with Shed, 123' L December	

Terminal Concept Design Option History 2019

VERSION	DESCRIPTION	
2019.1	Reduced Height Saltbox, 113 L Revised Program February	
2019.2	2 Story Flattened Saltbox, Reduced to 113' L January - March	
2019.3	2 Story Flattened Gable, 1 Story Waiting Room, Reduced to 113' L January - March	
2019.4	2 & 3 Story Crossing Gable, Reduced to 113' L January - March	
2019.5	2 Story Flattened Gable - Shifted Northward June	

VERSION	DESCRIPTION	
2019.6	2 Story Flattened Gable - Shifted Northward & Mirrored June	
2019.7	2 Story Pitched Roof, 1 Story over Waiting Room, Reduced to 113' L July - August	
2019.8	2 Story Pitched Roof, 1 Story over Waiting Room - Mirrored Plan Reduced to 113' L July - August	
2019.9	1 Story Flat Roof with Solar Panels, 133' L 2 Story Utility Building with Staff Occupancy July - August	
2019.10	1 Story Flat Roof with Solar Panels, 123' L 2 Story Utility Building with Staff Occupancy July - August	

Option 2019.10 One Story Terminal



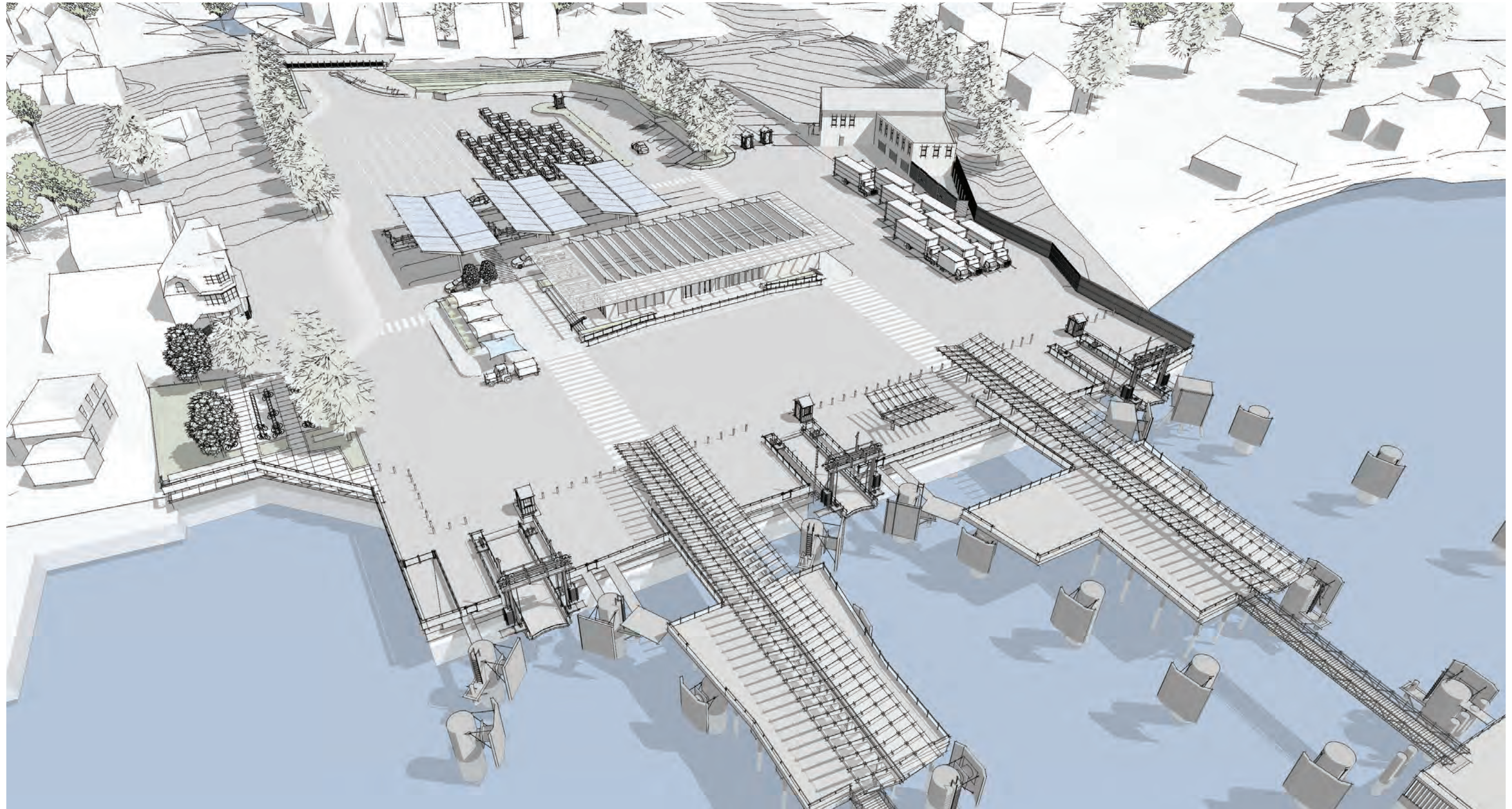
Option 2019.10 One Story Terminal with Bus Berth Solar Canopies



Option 2019.10 One Story Terminal with Bus Berth Solar Canopies



Option 2019.10 One Story Terminal



Option 2019.10 One Story Terminal

Terminal Building:

- Reduced to one story
- Aligned to October 2018 Position

Cutoff to Devils Foot Island View Shadow: El. +27.0 Feet

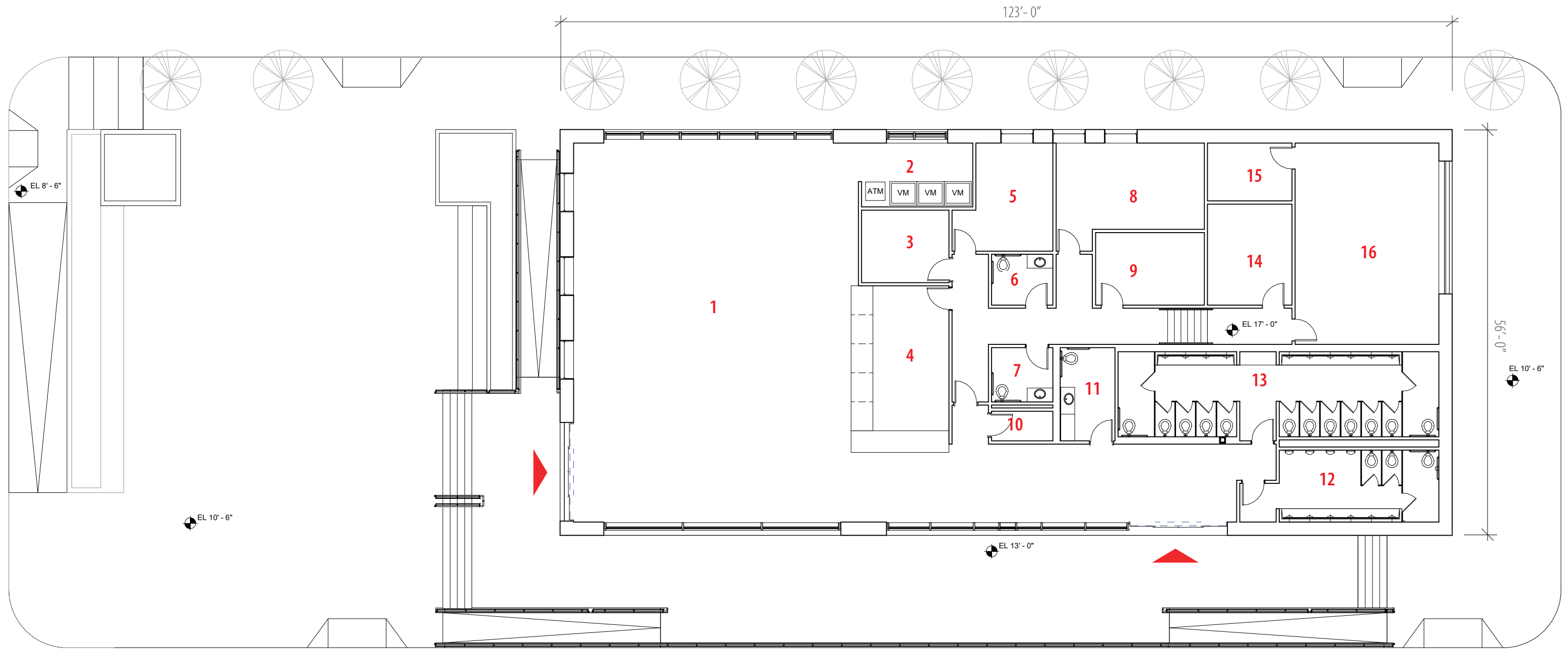
Camera Location: Viewpoint 1, Crane Street Bridge

Camera Elevation: 5'-0" Above Sidewalk

Lift Platform Location: Northwest Corner of New Terminal; Point B



Option 2019.10 One Story Terminal



First Floor Plan

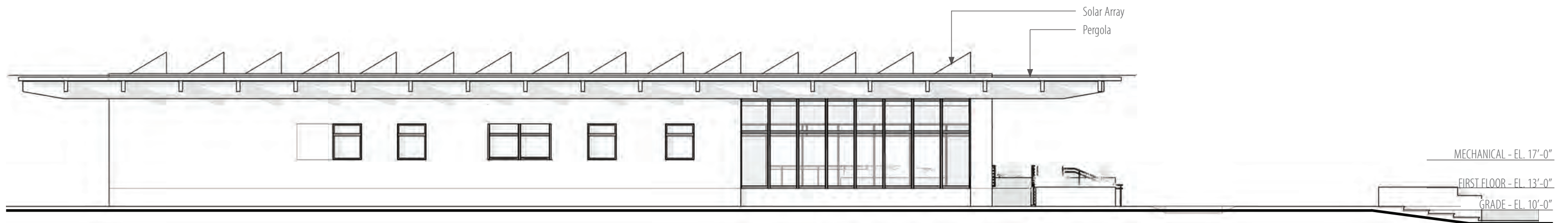
- | | | | |
|---|---|---|--|
| 1. WAITING ROOM
40'-0" x 50'-0" | 5. BREAK ROOM
12'-0" x 12'-0" | 9. TERMINAL MANAGER'S OFFICE
9'-0" x 17'-6" | 13. PUBLIC WOMEN'S RESTROOM
12 W.C. / 10 LAV 24'-6" x 25'-0" |
| 2. VENDING
15'-0" x 8'-0" | 6. EMPLOYEE RESTROOM - MEN
8'-0" x 10'-0" | 10. JANITOR
5'-0" x 8'-0" | 14. TELECOM / DATA
9'-0" x 17'-6" |
| 3. CASH ROOM
15'-0" x 8'-0" | 7. EMPLOYEE RESTROOM - WOMEN
8'-0" x 10'-0" | 11. UNISEX RESTROOM
1 W.C. / 1 LAV 8'-6" x 8'-6" | 15. ELECTRICAL ROOM
8'-6" x 12'-0" |
| 4. TICKETING
12'-0" x 20'-0" | 8. TERMINAL AGENTS OFFICE
13'-0" x 17'-6" | 12. PUBLIC MEN'S RESTROOM
3 W.C. / 4 UR / 4 LAV 13'-0" x 16'-6" | 16. MECHANICAL
20'-0" x 23'-0" |



Option 2019.10 One Story Terminal

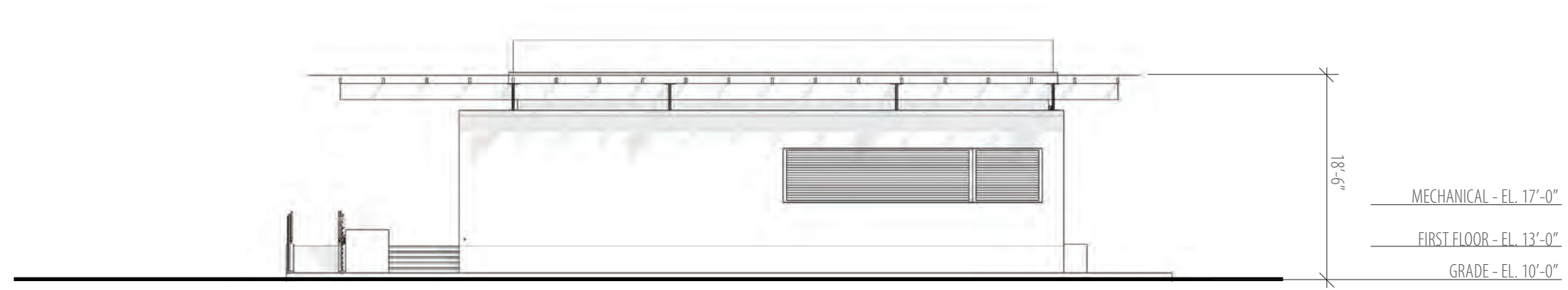


North Elevation

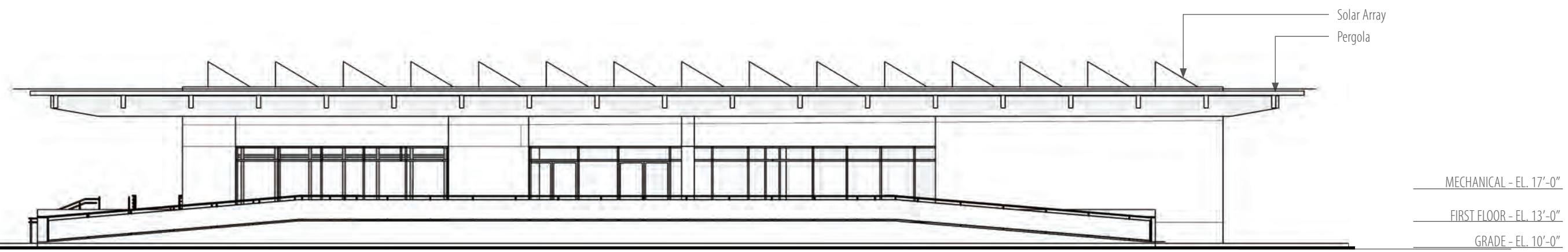


East Elevation

Option 2019.10 One Story Terminal

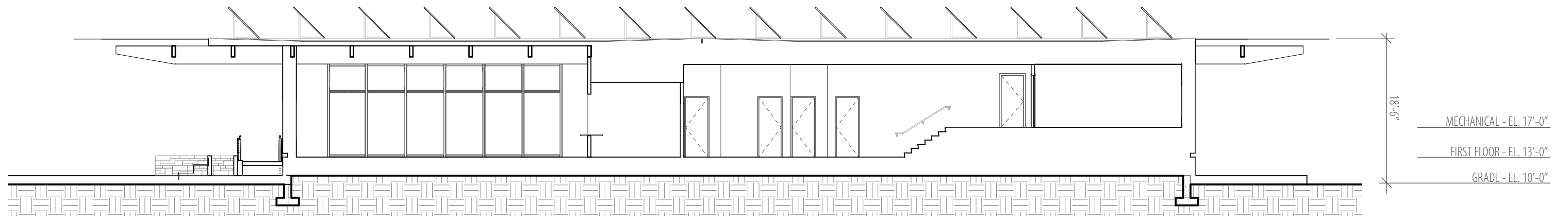


South Elevation



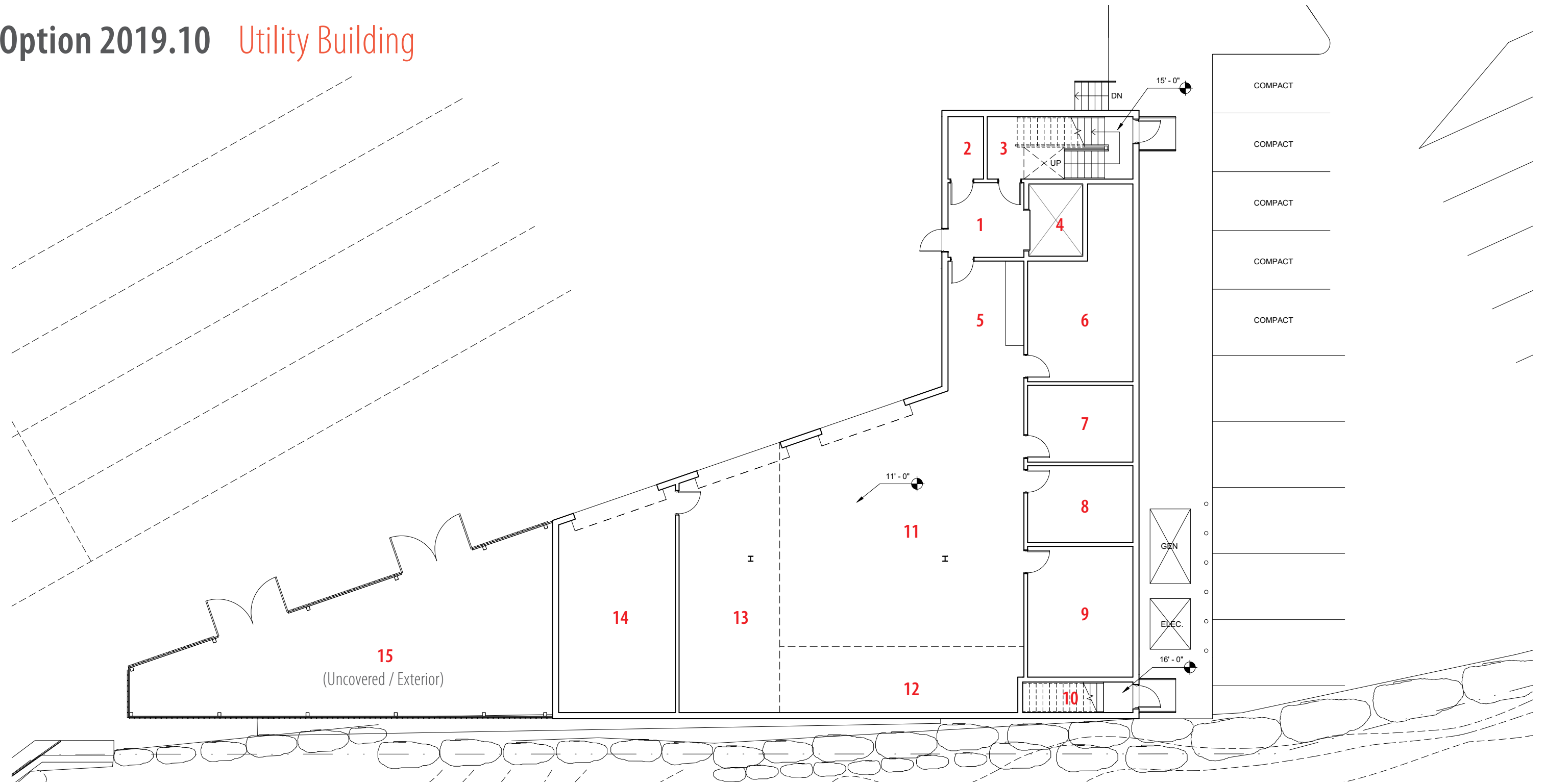
West Elevation

Option 2019.10 One Story Terminal



Section

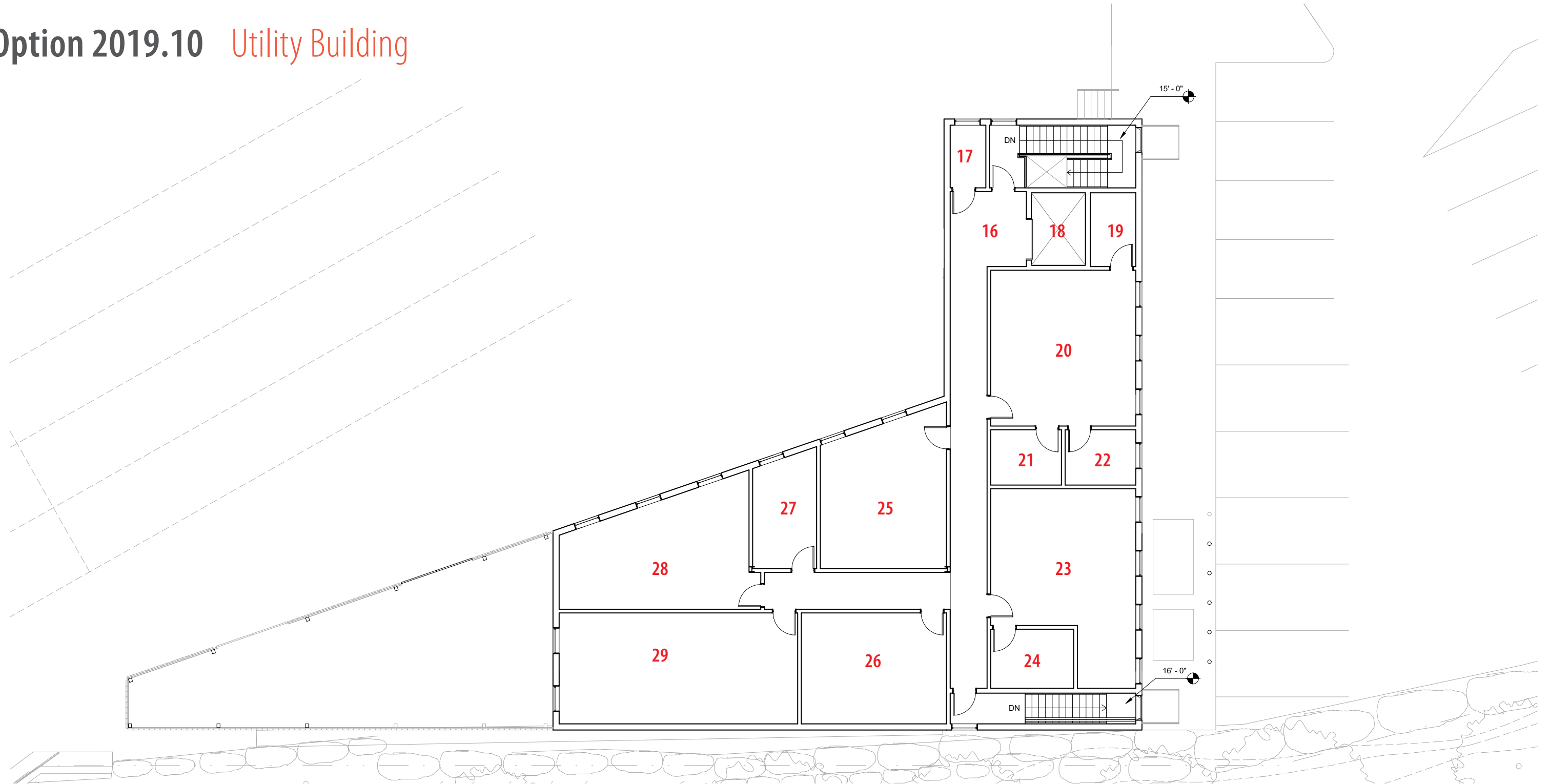
Option 2019.10 Utility Building



First Floor Plan

- | | | | |
|------------------------------------|--|--|--|
| 1. ENTRY
10'-0" x 10'-0" | 5. WORK AREA
15'-6" x 10'-0" | 9. CENTERPLATE STORAGE
14'-6" x 17'-6" | 13. CONSUMABLE STORAGE
33'-6" x 13'-6" |
| 2. JANITOR
8'-6" x 5'-0" | 6. LOST & FOUND
14'-6" x 16'-6" | 10. STAIR | 14. WASTE OIL STORAGE
28'-0" x 16'-0" |
| 3. STAIR | 7. RUNNER PICK UP / DROP OFF
14'-6" x 10'-6" | 11. EQUIPMENT STORAGE
31'-0" x 33'-6" | 15. TRASH & RECYCLING YARD |
| 4. ELEVATOR | 8. VINEYARD SPACE
14'-6" x 10'-6" | 12. MISCELLANEOUS STORAGE
9'-0" x 33'-6" | |

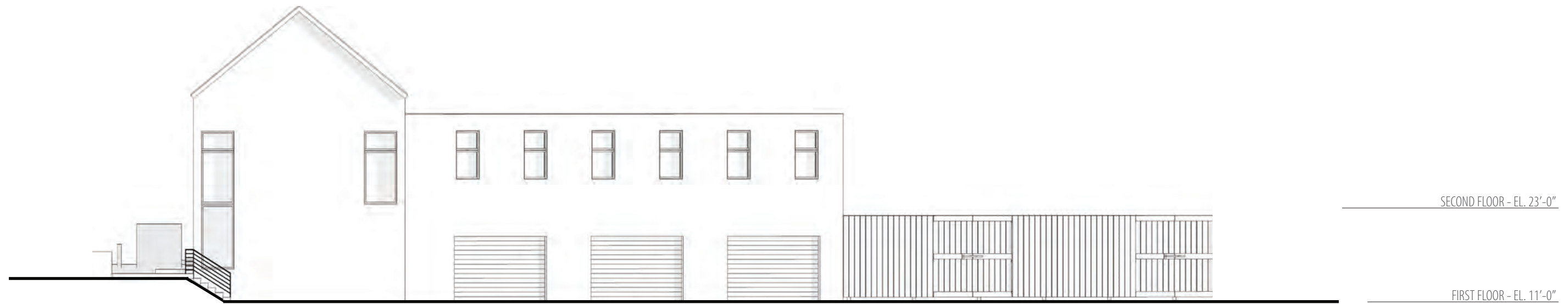
Option 2019.10 Utility Building



Second Floor Plan

- | | | | |
|--|--|--|--|
| 16. ELEVATOR LOBBY
10'-0" x 10'-0" | 20. EMPLOYEE LOCKER ROOM
20'-0" x 21'-0" | 24. ELECTRICAL ROOM
11'-0" x 8'-0" | 28. MULTI-PURPOSE ROOM
25'-6" x 14'-6" |
| 17. JANITOR
8'-6" x 4'-6" | 21. EMPLOYEE RESTROOM - MEN
8'-0" x 10'-0" | 25. EMPLOYEE BREAK ROOM
11'-0" x 8'-0" | 29. TERMINAL STORAGE
15'-0" x 32'-0" |
| 18. ELEVATOR | 22. EMPLOYEE RESTROOM - WOMEN
8'-0" x 10'-0" | 26. LINEN
19'-6" x 15'-0" | |
| 19. ELEVATOR MACHINE ROOM
10'-0" x 6'-0" | 23. MECHANICAL
20'-0" x 18'-6" | 27. TELECOM / DATA
15'-0" x 8'-6" | |

Option 2019.10 Utility Building



North Elevation



East Elevation

West Elevation

Program Comparison

Terminal Building

2019.7 & 2019.8 Two Story Terminal		2019.10 One Story Terminal	
Public Service Areas		Public Service Areas	
Lobby/Passenger Waiting Area	1,900	Lobby/Passenger Waiting Area	2,067
Vestibules/Entryways	344	Vestibules/Entryways	559
Food Concession/Vending	140	Food Concession/Vending	127
Public Restrooms	982	Public Restrooms	940
Ticket Selling / Customer Service Areas		Ticket Selling / Customer Service Areas	
Ticket/Cust. Serv. Counter Area	225	Ticket/Cust. Serv. Counter Area	258
Cash Handling Area	120	Cash Handling Area	120
Line Employee Areas		Line Employee Areas	
Employee Restrooms	160	Employee Restrooms	130
Employee Locker Room	415	Employee Locker Room	-
Employee Break Room	412	Employee Break Room	177
Dockworkers Restroom	-	Dockworkers Restroom	-
Dockworkers Break Room	-	Dockworkers Break Room	-
Supervisory Employee Areas		Supervisory Employee Areas	
Terminal Manager Office	120	Terminal Manager Office	150
Terminal Agents Office	258	Terminal Agents Office	258
Other Purpose Areas		Other Purpose Areas	
Multi-Purpose Room	380	Multi-Purpose Room	-
Storage Areas		Storage Areas	
Janitor's Room	39	Janitor's Room	35
Storage Room	156	Storage Room	-
Storage Room	72	Storage Room	-
Mechanical/Equipment Areas		Mechanical/Equipment Areas	
Electrical Room	104	Electrical Room	100
Mechanical Room	630	Mechanical Room	550
Data/Telecom Center	178	Data/Telecom Center	160
Elevator Machine Room	30	Elevator Machine Room	-

Total Net Area **6,665** **5,631**

Utility Building

2019.7 & 2019.8 Unoccupied		2019.10 Occupied	
Line Employee Areas		Line Employee Areas	
Employee Restrooms	-	Employee Restrooms	184
Employee Locker Room	-	Employee Locker Room	415
Employee Break Room	-	Employee Break Room	336
Other Purpose Areas		Other Purpose Areas	
Multi-Purpose Room	-	Multi-Purpose Room	380
Storage Areas		Storage Areas	
Janitor's Room	-	Janitor's Room	82
Terminal Storage Room	-	Terminal Storage Room	486
Trash & Recycling	1,000	Trash & Recycling	1,000
Waste Oil Storage	450	Waste Oil Storage	450
Lower Level Equip. Storage	1,100	Lower Level Equip. Storage	1,090
Lower Level Consumable Storage	460	Lower Level Consumable Storage	460
Lower Level Work Area	170	Lower Level Work Area	160
Vineyard Space	150	Vineyard Space	150
Runner Drop-Off / Pick Up Area	136	Runner Drop-Off / Pick Up Area	150
Lost and Found Area	275	Lost and Found Area	300
Miscellaneous Space	296	Miscellaneous Space	296
Linen Area	296	Linen Area	296
Centerplate Storage	255	Centerplate Storage	255
Mechanical/Equipment Areas		Mechanical/Equipment Areas	
Electrical Room	90	Electrical Room	90
Mechanical Room	-	Mechanical Room	432
Data/Telecom Center	-	Data/Telecom Center	130
Elevator Machine Room	-	Elevator Machine Room	62

Total Net Area **4,678** **7,204**