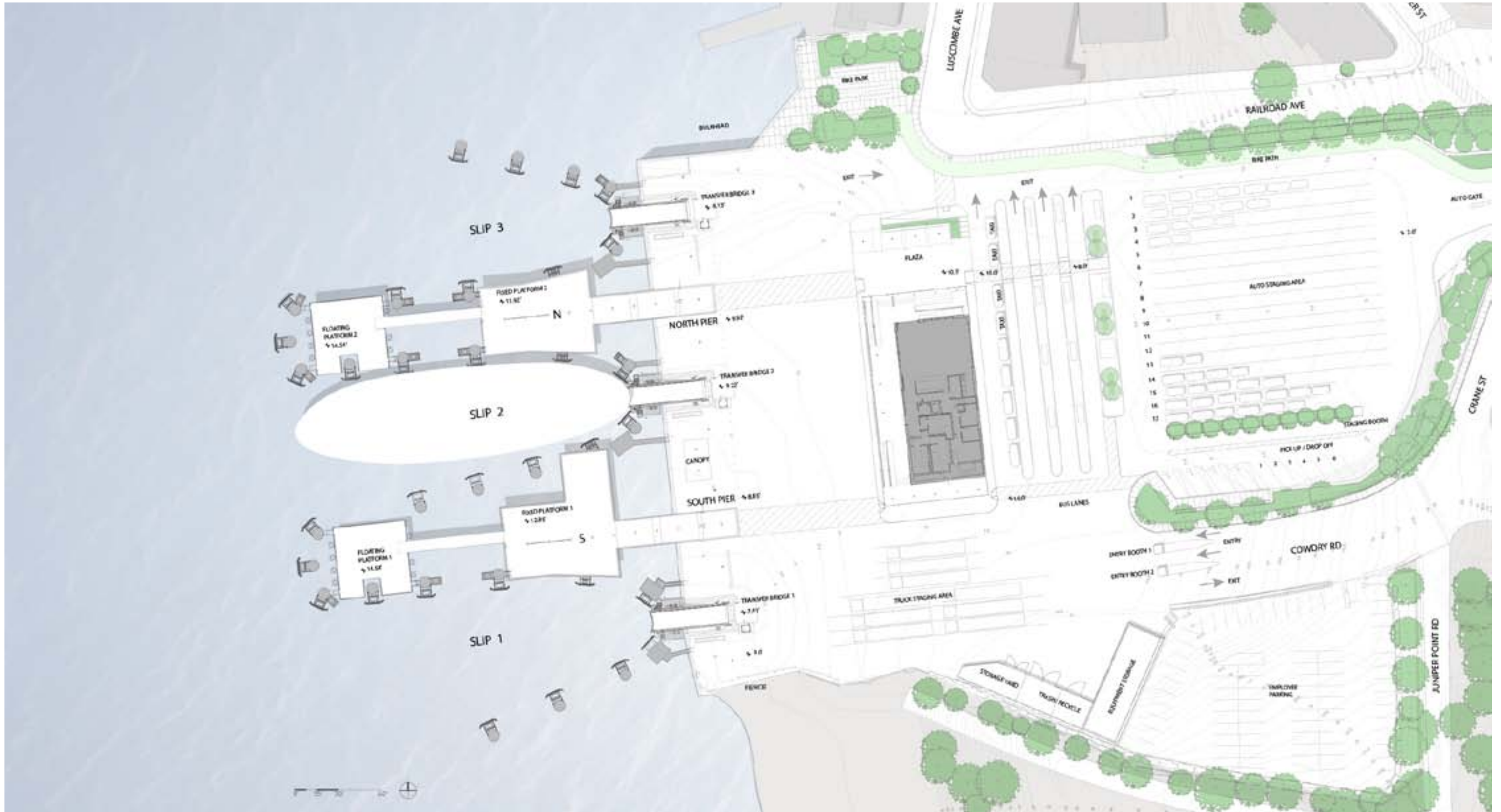


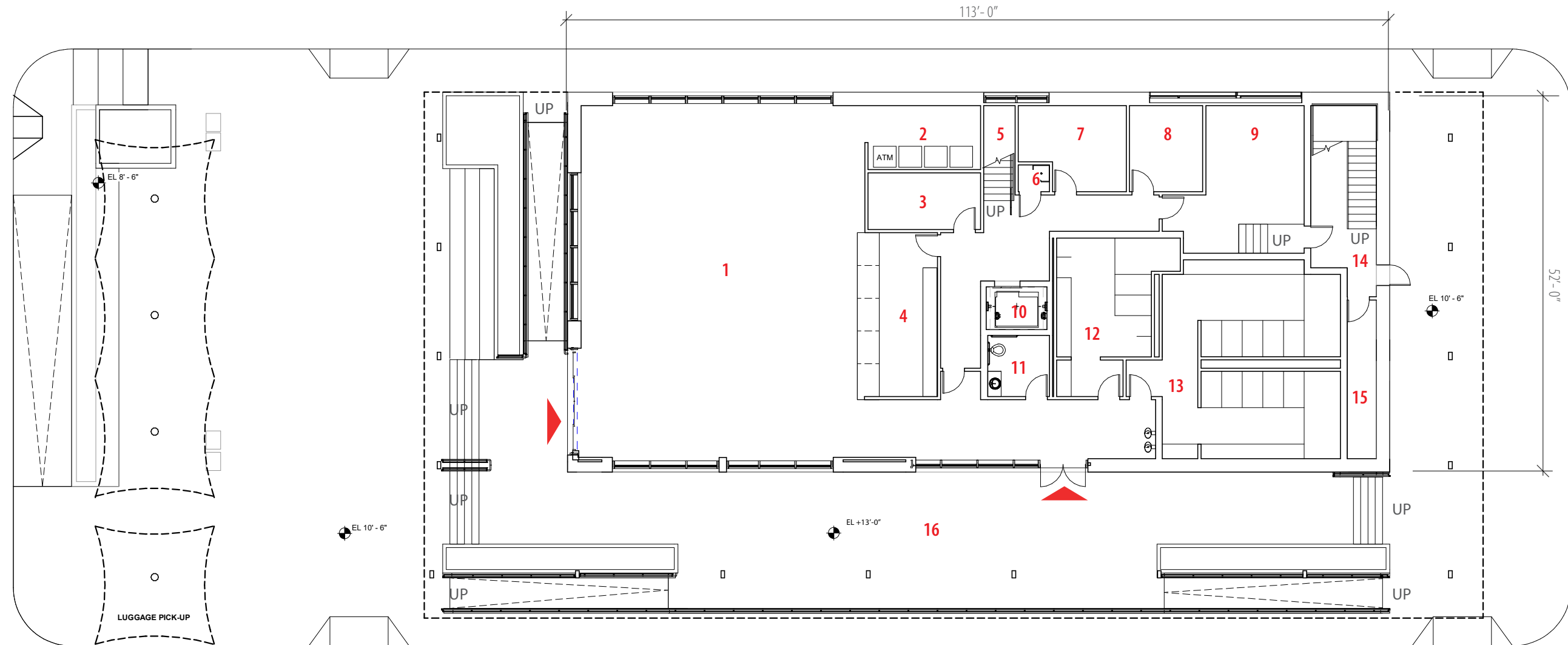
## Terminal Design Update



# Saltbox Roof - Site Plan



# Saltbox Roof - First Floor Plan



**1. WAITING ROOM**

40'-0" x 50'-0"

**2. VENDING**

15'-6" x 8'-6"

**3. CASH ROOM**

15'-6" x 7'-6"

**4. TICKETING**

11'-0" x 22'-6"

**5. STAIR**

**6. JANITOR CLOSET**

4'-0" x 4'-0"

**7. STORAGE**

12'-0" x 10'-0"

**8. TERMINAL MANAGER'S OFFICE**

12'-0" x 10'-0"

**9. TERMINAL AGENTS OFFICE**

13'-6" x 16'-0"

**10. ELEVATOR**

**11. UNISEX RESTROOM**

1 W.C. / 1 LAV 8'-6" x 8'-6"

**12. PUBLIC MEN'S RESTROOM**

3 W.C. / 4 UR / 4 LAV 13'-0" x 16'-6"

**13. PUBLIC WOMEN'S RESTROOM**

12 W.C. / 10 LAV 24'-6" x 25'-0"

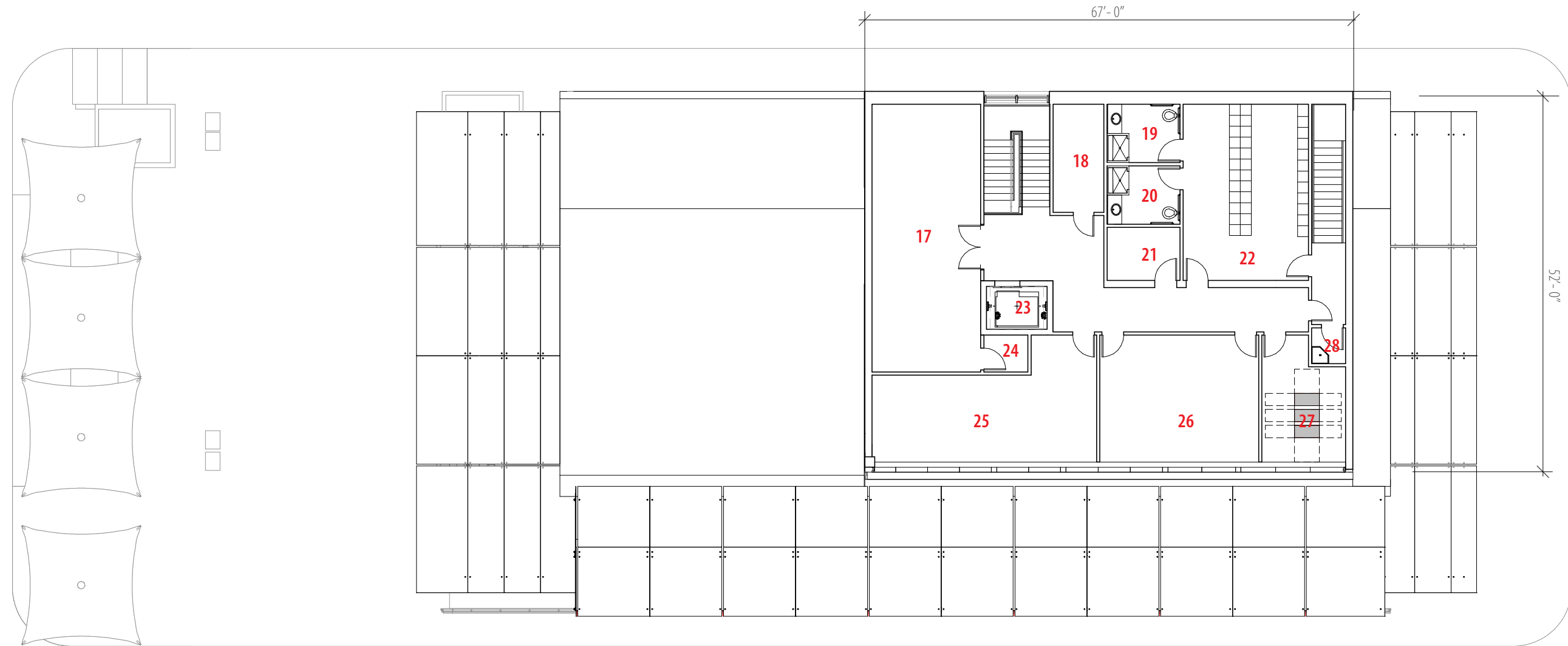
**14. STAIR**

**15. MECHANICAL**

4'-0" x 20'-0"

**16. TERRACE**

# Saltbox Roof - Second Floor Plan



**17. MECHANICAL ROOM**

15'-0" x 36'-6"

**18. ELECTRICAL**

7'-0" x 14'-6"

**19. STAFF WOMEN'S RESTROOM**

10'-0" x 8'-0"

**20. STAFF MEN'S RESTROOM**

10'-0" x 8'-0"

**21. STORAGE**

10'-0" x 7'-6"

**22. LOCKERS**

17'-0" x 24'-0"

**23. ELEVATOR**

**24. ELEVATOR MACHINE ROOM**

5'-0" x 6'-0"

**25. BREAK ROOM**

12'-0" x 31'-0"

**26. MULTI-PURPOSE ROOM**

17'-6" x 21'-6"

**27. TEL/DATA**

11'-6" x 13'-0"

**28. JANITOR CLOSET**

5'-0" x 4'-6"

# Saltbox Roof



EAST ELEVATION



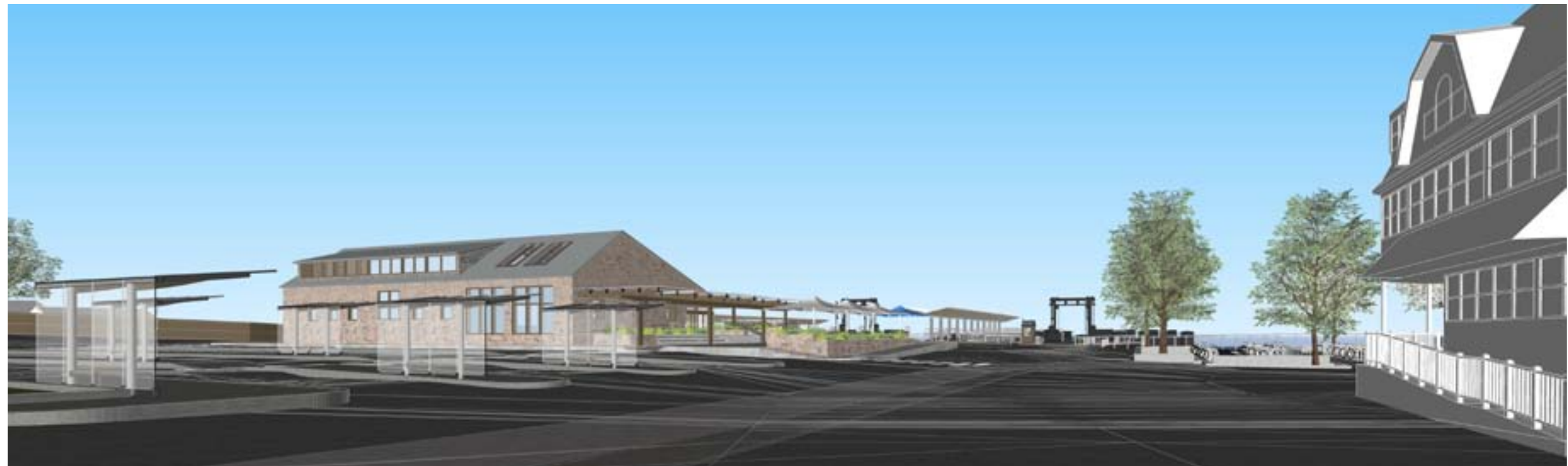
WEST ELEVATION

# Saltbox Roof



NORTH ELEVATION

SOUTH ELEVATION



Reduced Two Story Saltbox  
El. +40.5 Feet

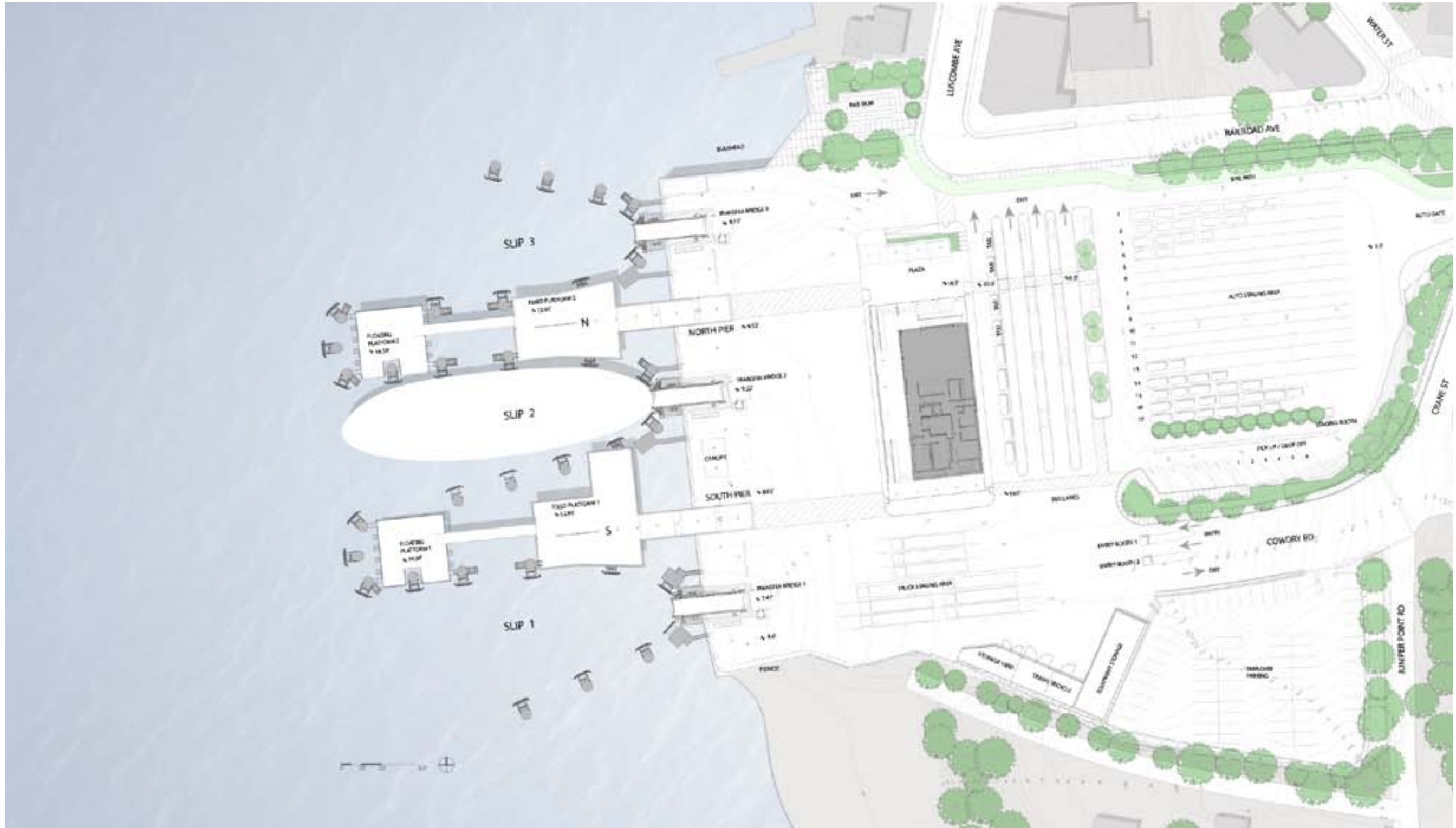
Camera Location: Viewpoint 1, Crane Street Bridge

Camera Elevation: 5'-0" Above Sidewalk

Lift Platform Location: Southwest Corner of New Terminal; Point A

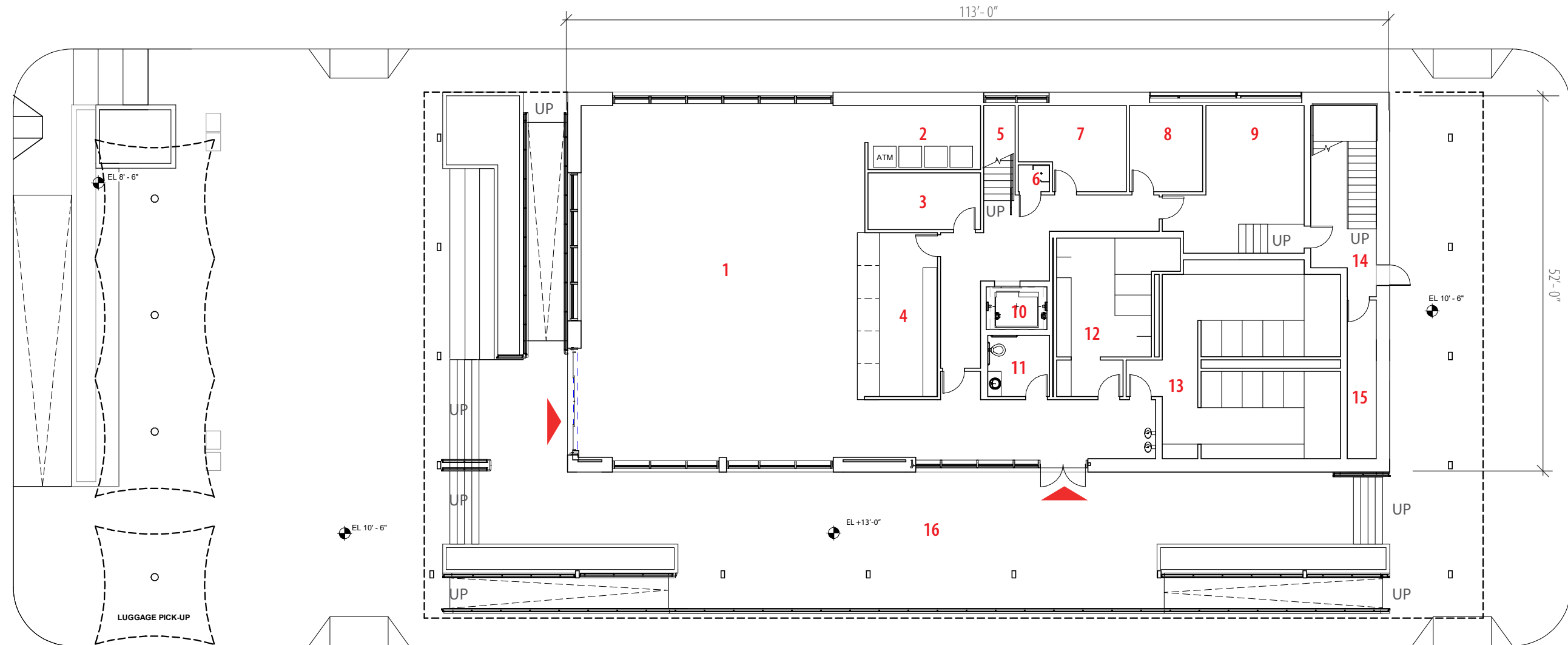


# Gable Roof - Site Plan





# Gable Roof - First Floor Plan



**1. WAITING ROOM**

40'-0" x 50'-0"

**2. VENDING**

15'-6" x 8'-6"

**3. CASH ROOM**

15'-6" x 7'-6"

**4. TICKETING**

11'-0" x 22'-6"

**5. STAIR**

**6. JANITOR CLOSET**

4'-0" x 4'-0"

**7. STORAGE**

12'-0" x 10'-0"

**8. TERMINAL MANAGER'S OFFICE**

12'-0" x 10'-0"

**9. TERMINAL AGENTS OFFICE**

13'-6" x 16'-0"

**10. ELEVATOR**

**11. UNISEX RESTROOM**

1 W.C. / 1 LAV 8'-6" x 8'-6"

**12. PUBLIC MEN'S RESTROOM**

3 W.C. / 4 UR / 4 LAV 13'-0" x 16'-6"

**13. PUBLIC WOMEN'S RESTROOM**

12 W.C. / 10 LAV 24'-6" x 25'-0"

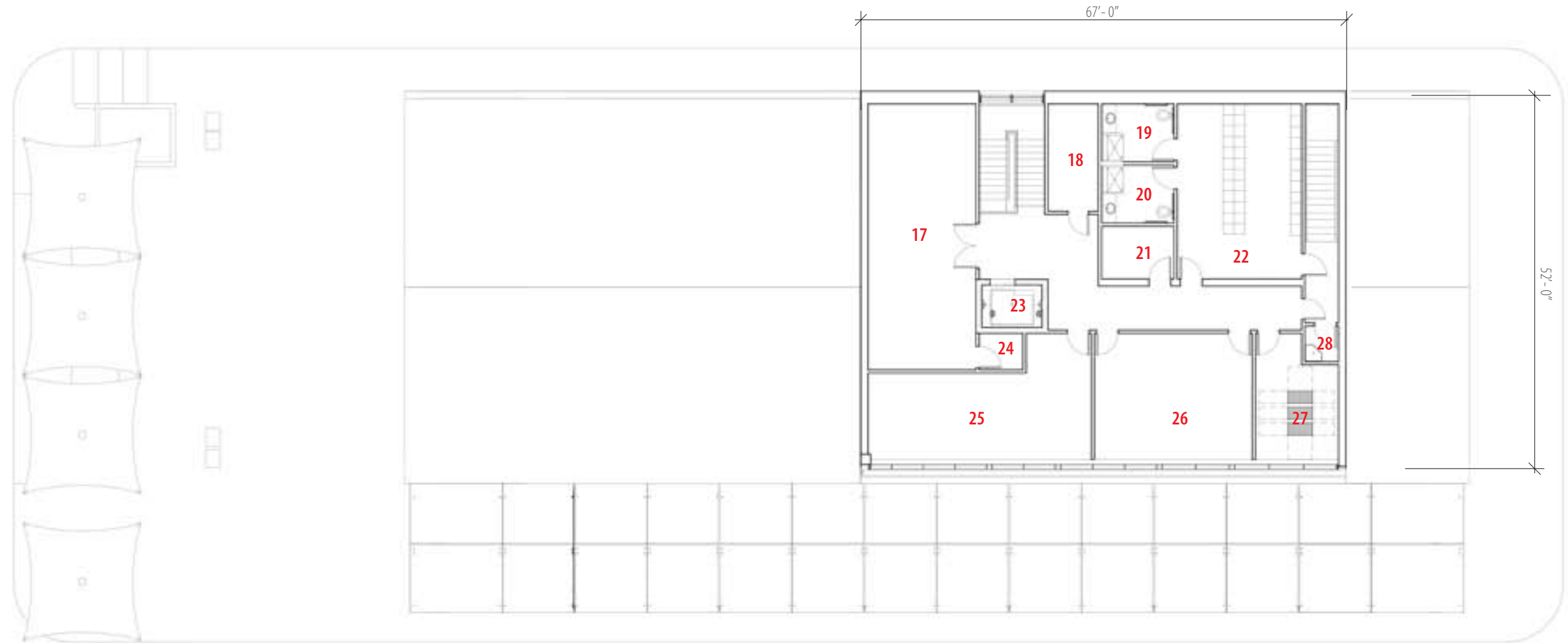
**14. STAIR**

**15. MECHANICAL**

4'-0" x 20'-0"

**16. TERRACE**

# Gable Roof - Second Floor Plan



**17. MECHANICAL ROOM**

15'-0" x 36'-6"

**18. ELECTRICAL**

7'-0" x 14'-6"

**19. STAFF WOMEN'S RESTROOM**

10'-0" x 8'-0"

**20. STAFF MEN'S RESTROOM**

10'-0" x 8'-0"

**21. STORAGE**

10'-0" x 7'-6"

**22. LOCKERS**

17'-0" x 24'-0"

**23. ELEVATOR**

**24. ELEVATOR MACHINE ROOM**

5'-0" x 6'-0"

**25. BREAK ROOM**

12'-0" x 31'-0"

**26. MULTI-PURPOSE ROOM**

17'-6" x 21'-6"

**27. TEL/DATA**

11'-6" x 13'-0"

**28. JANITOR CLOSET**

5'-0" x 4'-6"

# Gable Roof



EAST ELEVATION

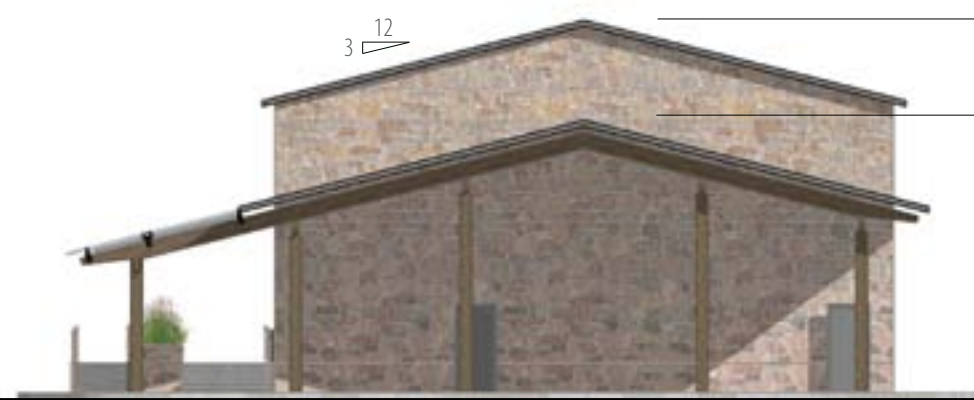


WEST ELEVATION

# Gable Roof



NORTH ELEVATION



SOUTH ELEVATION

SECOND FLOOR - EL. 25'-0"

FIRST FLOOR - EL. 13'-0"

GRADE - EL. 10'-0"



Reduced Two Story Saltbox  
El. +40.5 Feet

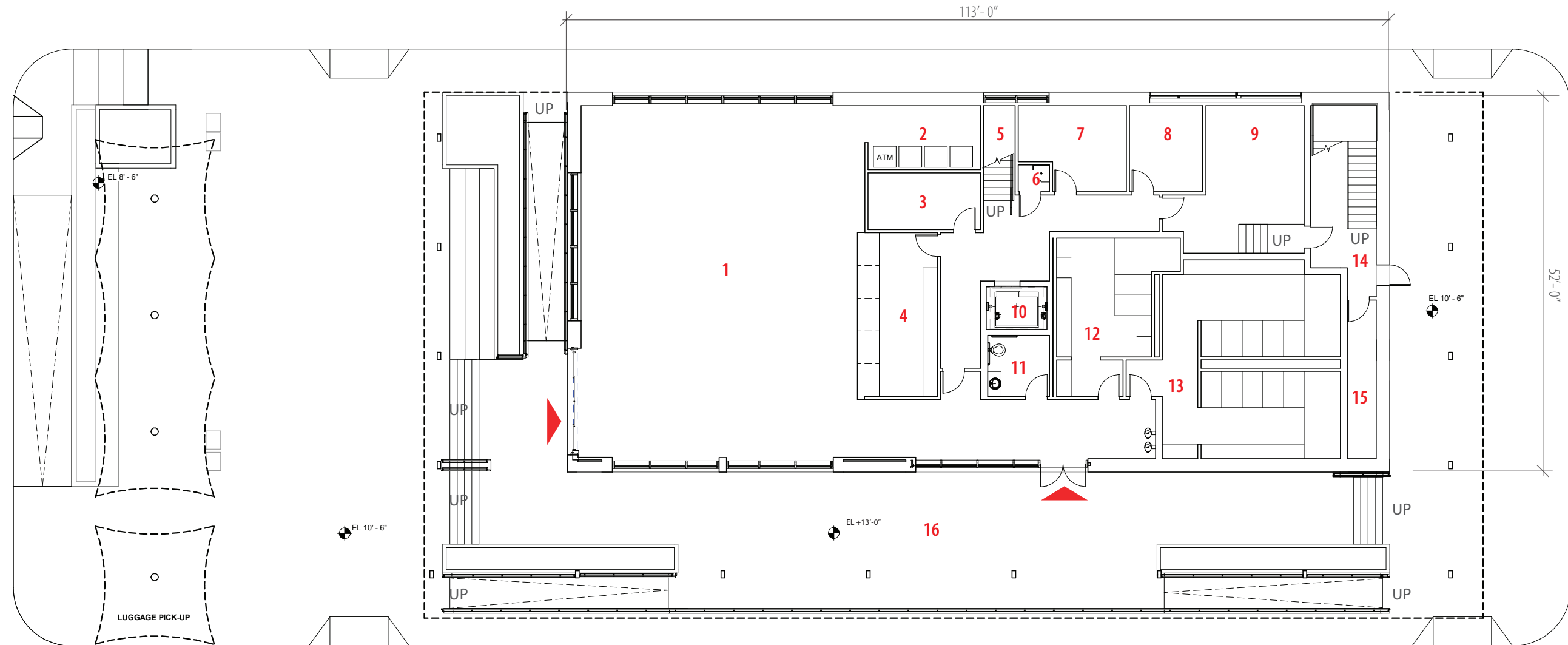
Camera Location: Viewpoint 1, Crane Street Bridge

Camera Elevation: 5'-0" Above Sidewalk

Lift Platform Location: Southwest Corner of New Terminal; Point A



# Gable Roof (Alternate)- First Floor Plan



**1. WAITING ROOM**

40'-0" x 50'-0"

**2. VENDING**

15'-6" x 8'-6"

**3. CASH ROOM**

15'-6" x 7'-6"

**4. TICKETING**

11'-0" x 22'-6"

**5. STAIR**

**6. JANITOR CLOSET**

4'-0" x 4'-0"

**7. STORAGE**

12'-0" x 10'-0"

**8. TERMINAL MANAGER'S OFFICE**

12'-0" x 10'-0"

**9. TERMINAL AGENTS OFFICE**

13'-6" x 16'-0"

**10. ELEVATOR**

**11. UNISEX RESTROOM**

1 W.C. / 1 LAV 8'-6" x 8'-6"

**12. PUBLIC MEN'S RESTROOM**

3 W.C. / 4 UR / 4 LAV 13'-0" x 16'-6"

**13. PUBLIC WOMEN'S RESTROOM**

12 W.C. / 10 LAV 24'-6" x 25'-0"

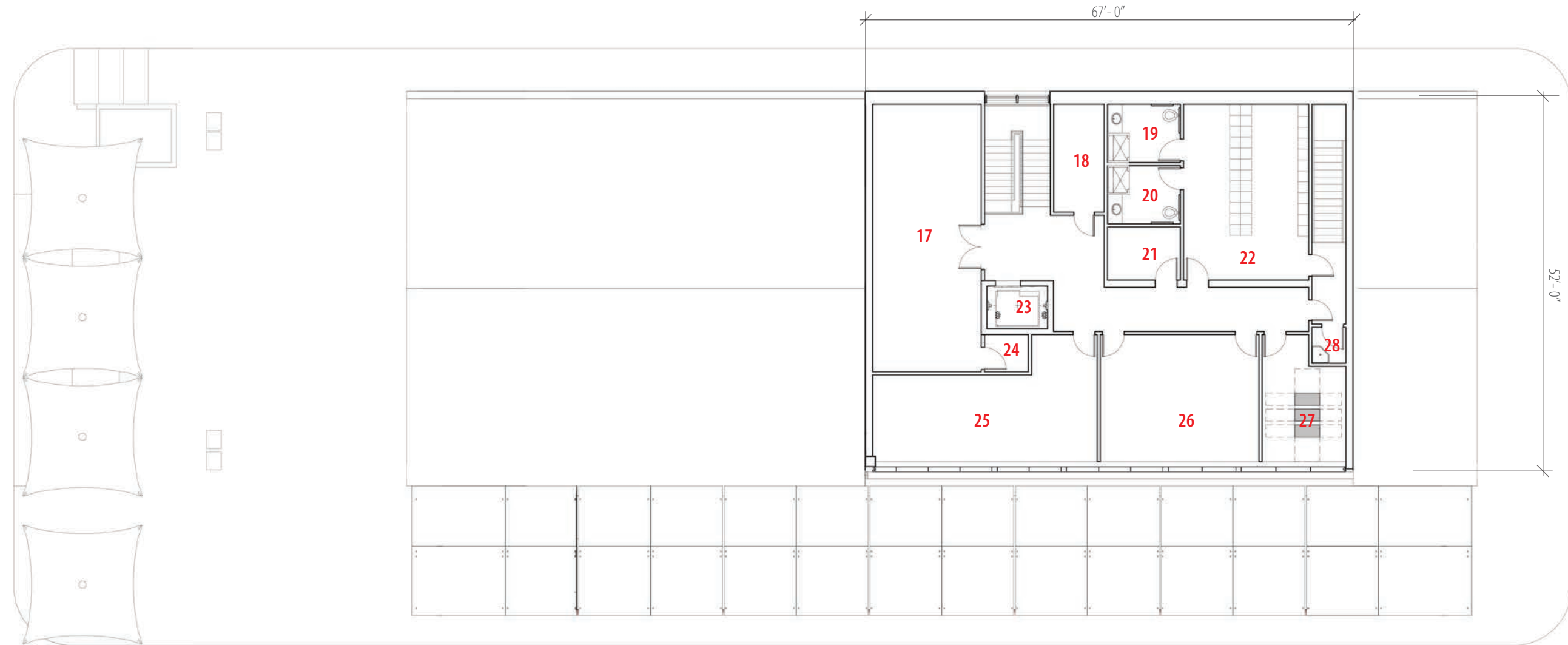
**14. STAIR**

**15. MECHANICAL**

4'-0" x 20'-0"

**16. TERRACE**

# Gable Roof (Alternate) - Second Floor Plan



**17. MECHANICAL ROOM**

15'-0" x 36'-6"

**18. ELECTRICAL**

7'-0" x 14'-6"

**19. STAFF WOMEN'S RESTROOM**

10'-0" x 8'-0"

**20. STAFF MEN'S RESTROOM**

10'-0" x 8'-0"

**21. STORAGE**

10'-0" x 7'-6"

**22. LOCKERS**

17'-0" x 24'-0"

**23. ELEVATOR**

**24. ELEVATOR MACHINE ROOM**

5'-0" x 6'-0"

**25. BREAK ROOM**

12'-0" x 31'-0"

**26. MULTI-PURPOSE ROOM**

17'-6" x 21'-6"

**27. TEL/DATA**

11'-6" x 13'-0"

**28. JANITOR CLOSET**

5'-0" x 4'-6"

# Gable Roof (Alternate)



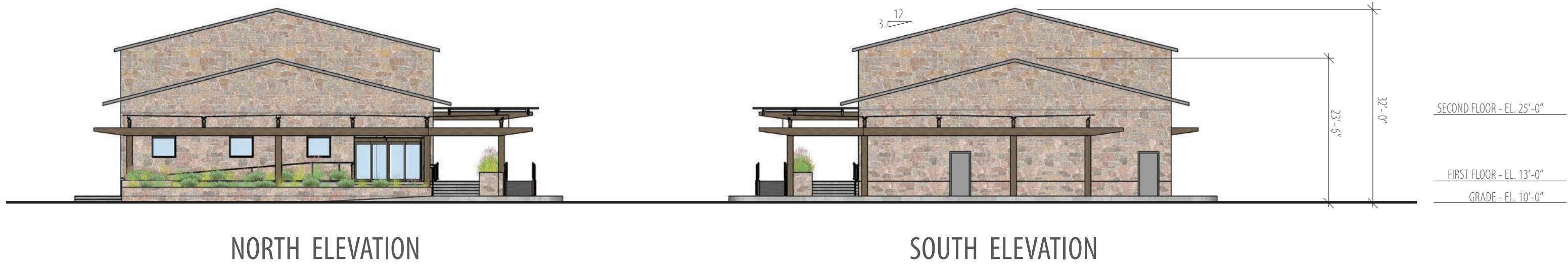
EAST ELEVATION



WEST ELEVATION



# Gable Roof (Alternate)



Reduced Two Story Saltbox  
El. +40.5 Feet

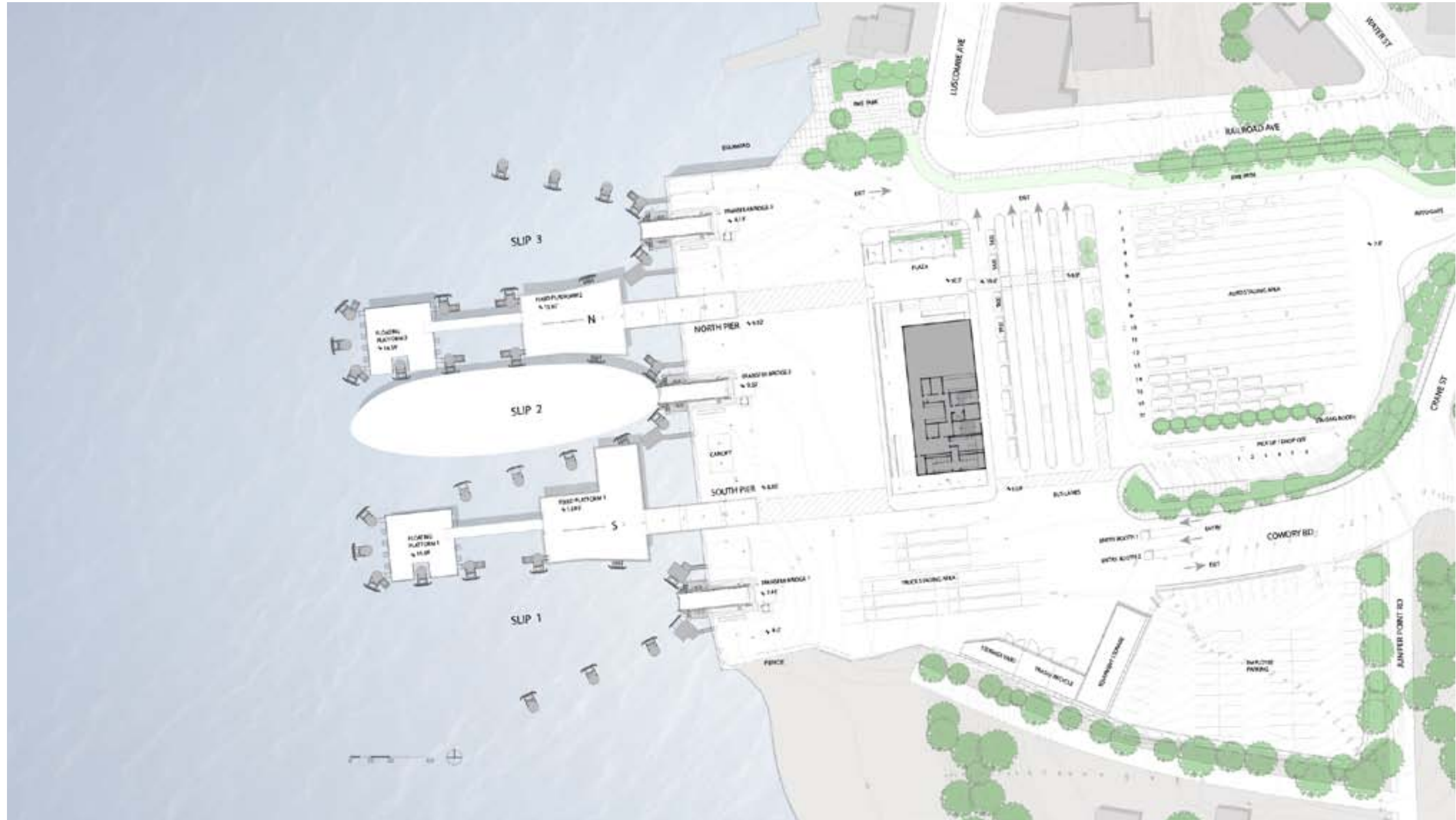
Camera Location: Viewpoint 1, Crane Street Bridge

Camera Elevation: 5'-0" Above Sidewalk

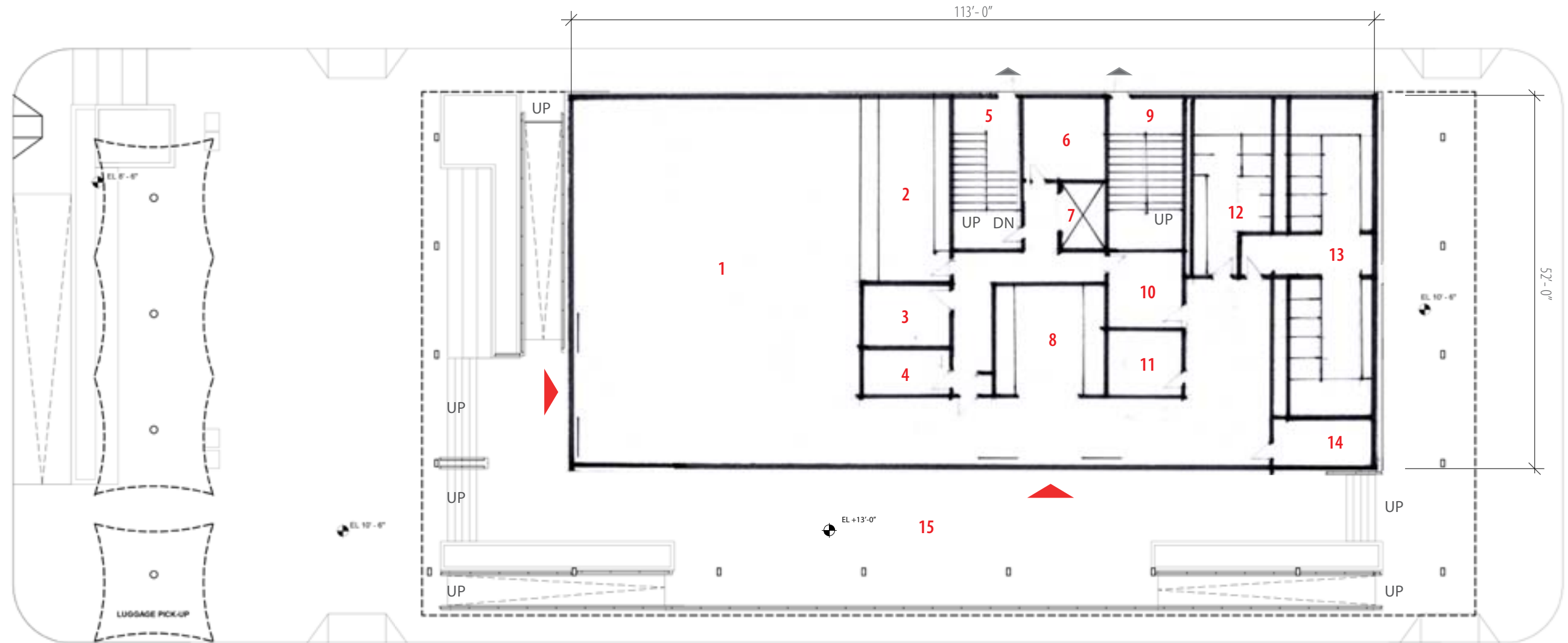
Lift Platform Location: Southwest Corner of New Terminal; Point A



# Three-Story Crossing Gable Roof - Site Plan



# Three-Story Crossing Gable Roof - First Floor Plan



**1. WAITING ROOM**

40'-0" x 50'-0"

**2. TICKETING**

12'-0" x 25'-0"

**3. CASH ROOM**

12'-0" x 8'-0"

**4. STORAGE**

12'-0" x 6'-0"

**5. STAIR**

**6. MECHANICAL**

9'-0" x 9'-0"

**7. ELEVATOR**

**8. VENDING**

15'-0" x 15'-0"

**9. STAIR**

**10. STORAGE**

10'-0" x 10'-0"

**11. UNISEX RESTROOM**

1 W.C. / 1 LAV 10'-0" x 8'-0"

**12. PUBLIC MEN'S RESTROOM**

3 W.C. / 5 UR / 4 LAV 12'-0" x 18'-0"

**13. PUBLIC WOMEN'S RESTROOM**

12 W.C. / 10 LAV 12'-0" x 45'-0"

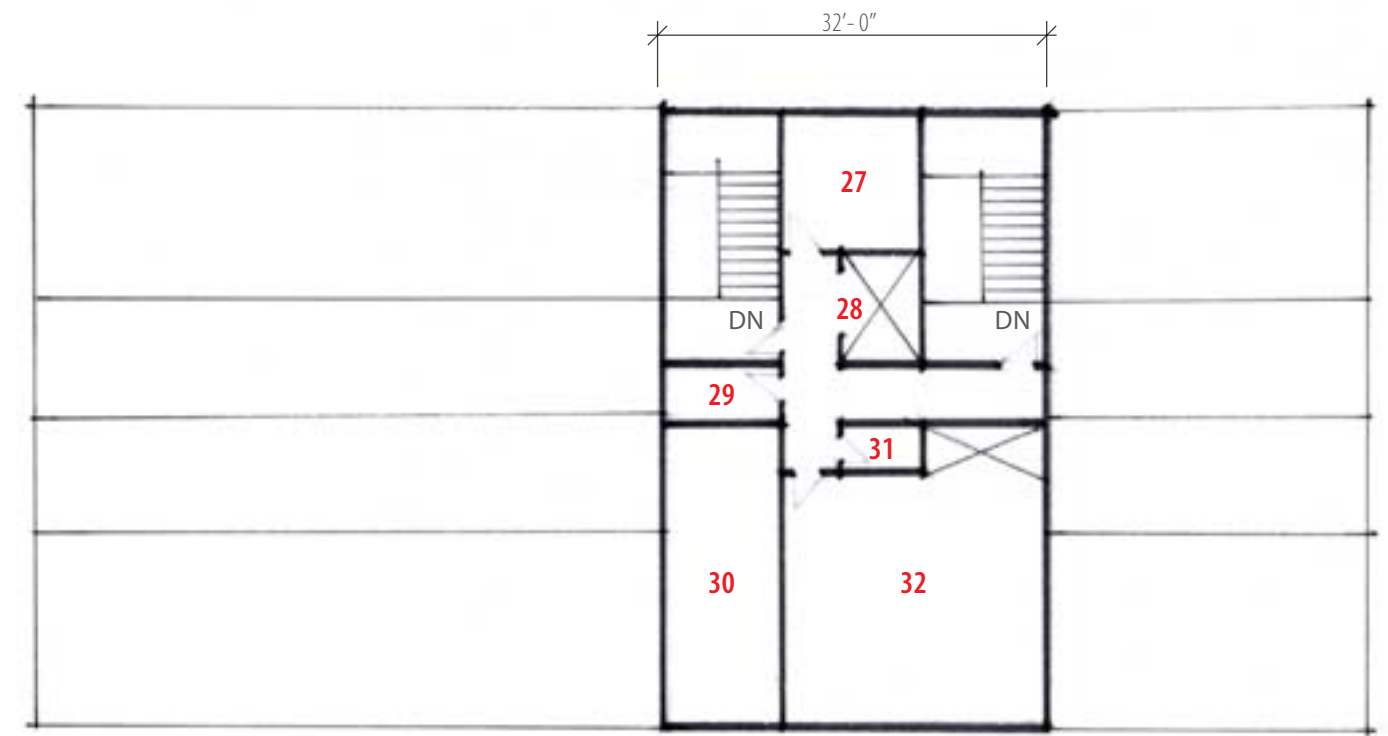
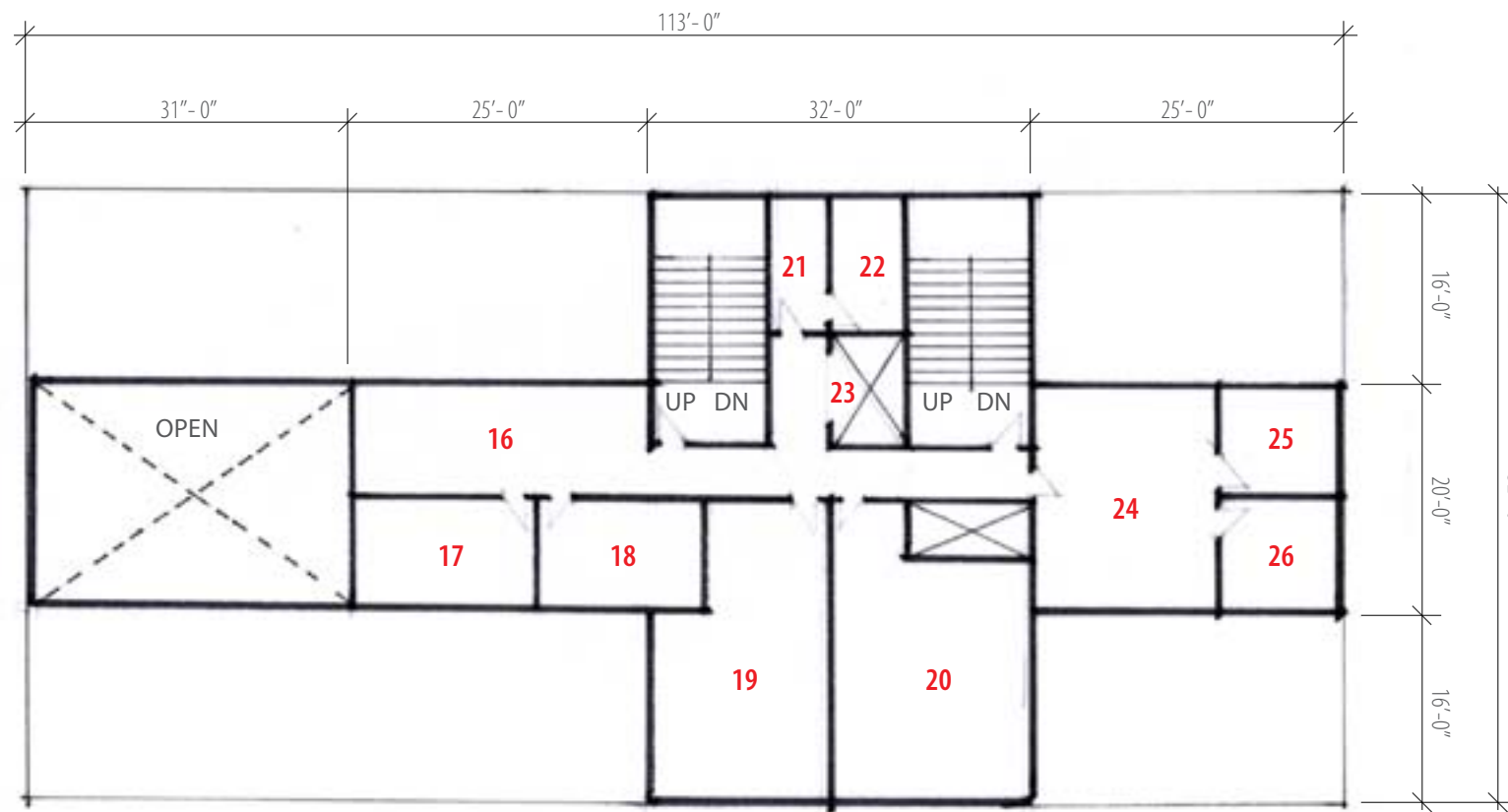
**14. JANITOR CLOSET**

12'-0" x 6'-0"

**15. TERRACE**

# Three-Story Crossing Gable Roof - Second Floor Plan

# Third Floor Plan



**16. TERMINAL AGENTS OFFICE**

24'-0" x 9'-0"

**17. TEL/DATA**

15'-0" x 9'-0"

**18. TERMINAL MANAGER'S OFFICE**

14'-0" x 9'-0"

**19. BREAK ROOM**

14'-0" x 15'-0"

**20. MULTI-PURPOSE ROOM**

16'-0" x 20'-0"

**21. JANITOR CLOSET**

4'-11" x 9'-0"

**22. ELECTRICAL**

5'-0" x 11'-0"

**23. ELEVATOR**

**24. LOCKERS**

15'-0" x 18'-0"

**25. STAFF WOMEN'S RESTROOM**

10'-0" x 8'-0"

**26. STAFF MEN'S RESTROOM**

10'-0" x 8'-0"

**27. ELECTRICAL**

11'-0" x 11'-0"

**28. ELEVATOR**

**29. JANITOR CLOSET**

4'-0" x 9'-0"

**30. STORAGE**

25'-0" x 9'-0"

**31. ELEVATOR MACHINE ROOM**

4'-0" x 6'-0"

**32. MECHANICAL ROOM**

22'-0" x 22'-0"

# Three-Story Crossing Gable Roof

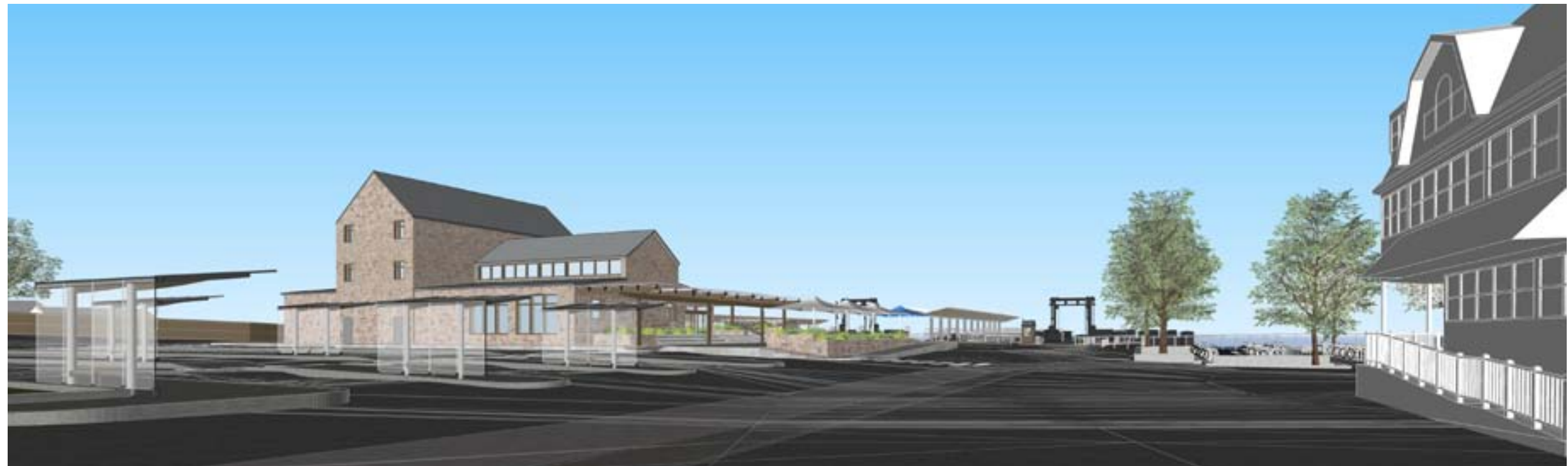
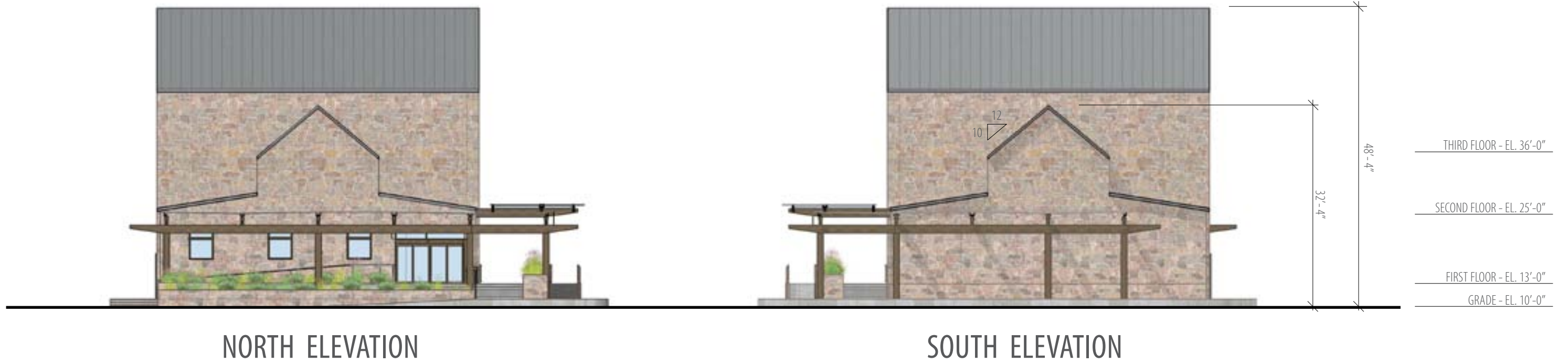


EAST ELEVATION



WEST ELEVATION

# Three-Story Crossing Gable Roof



Reduced Two Story Saltbox  
El. +40.5 Feet

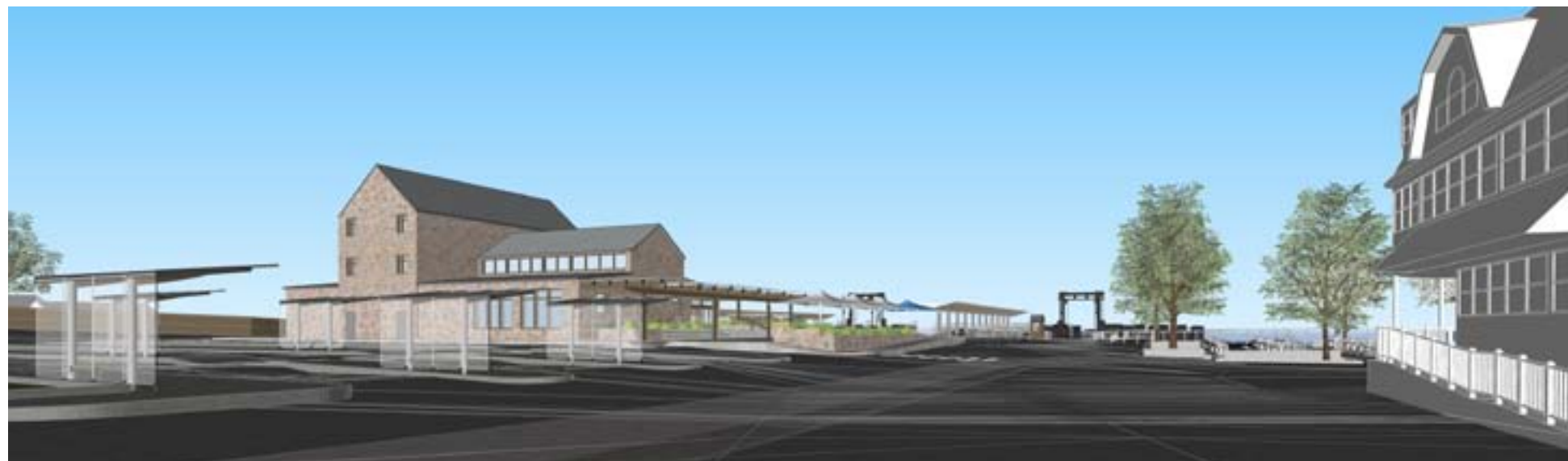
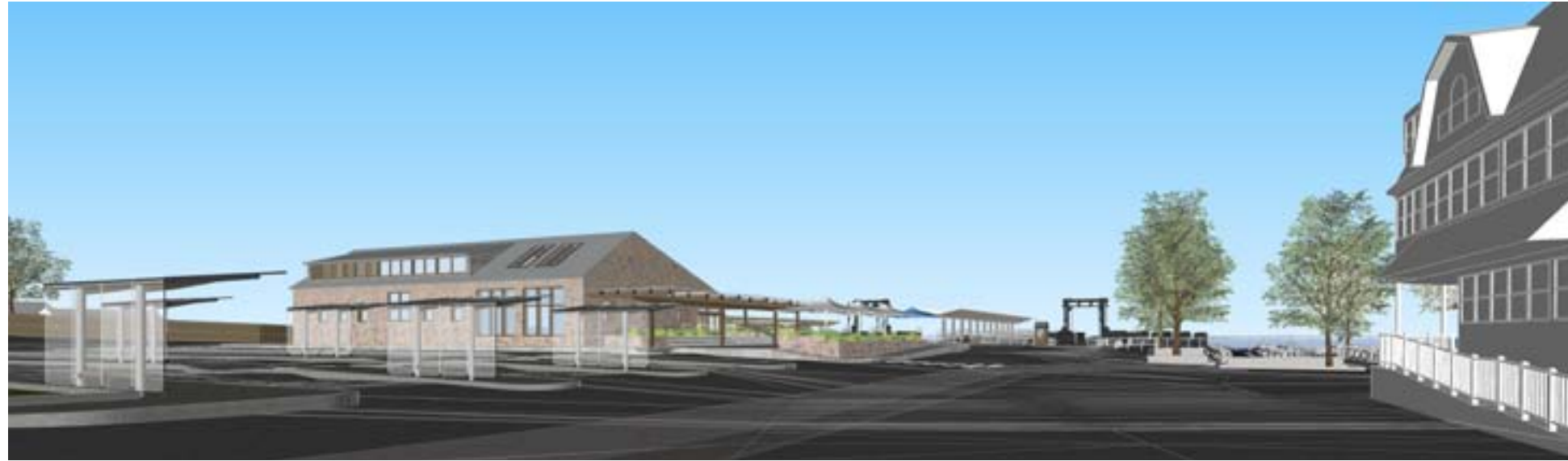
Camera Location: Viewpoint 1, Crane Street Bridge

Camera Elevation: 5'-0" Above Sidewalk

Lift Platform Location: Southwest Corner of New Terminal; Point A







Saltbox Roof



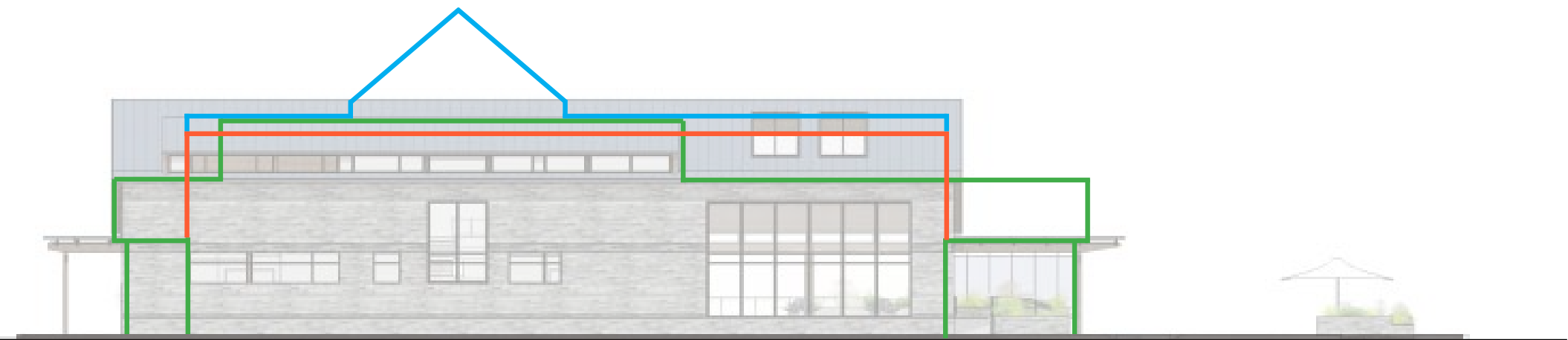
Gable Roof

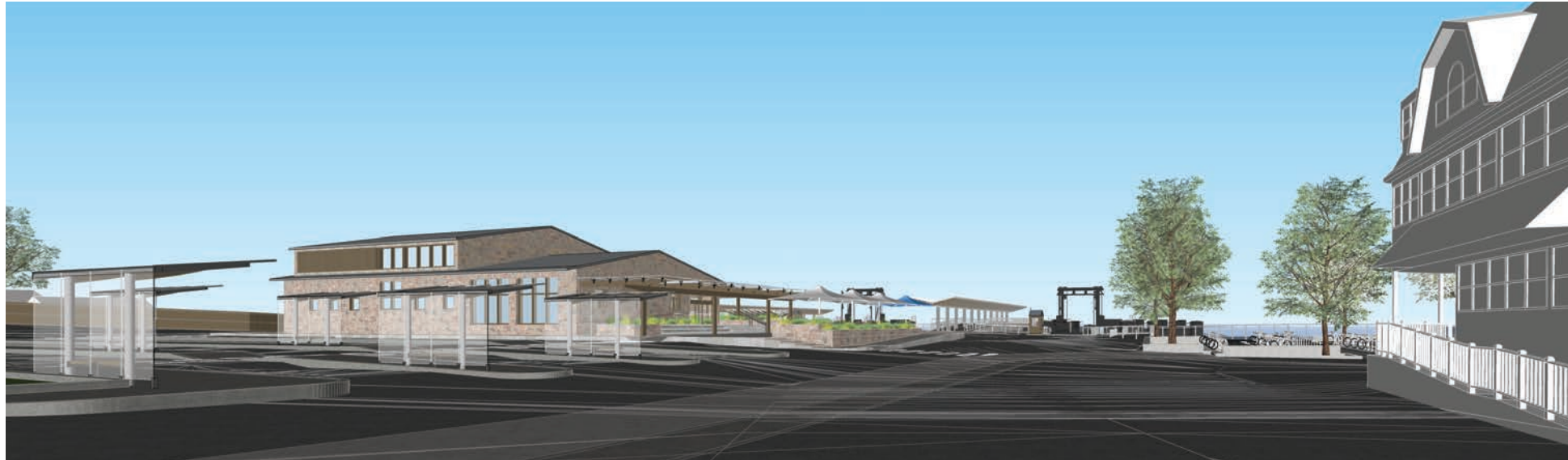
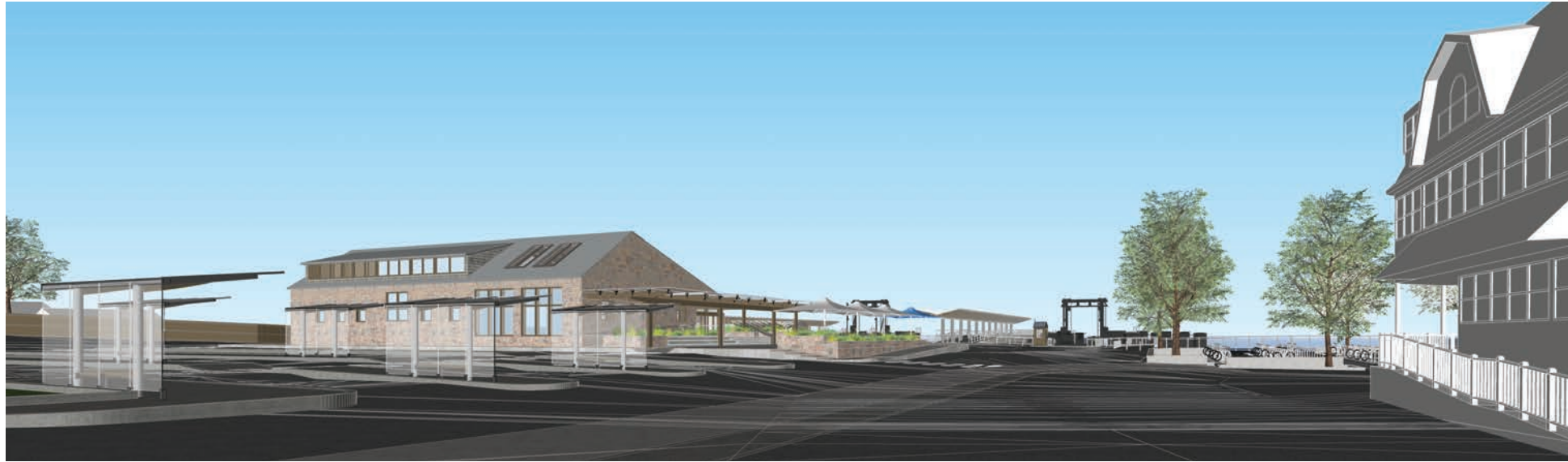


Three-Story Crossing  
Gable Roof



Previous Option





Gable roof alternate

Saltbox Roof



Gable Roof (alternate)



Three-Story Crossing  
Gable Roof



Previous Option



## Base Structural System

### (a floodproof "boat")

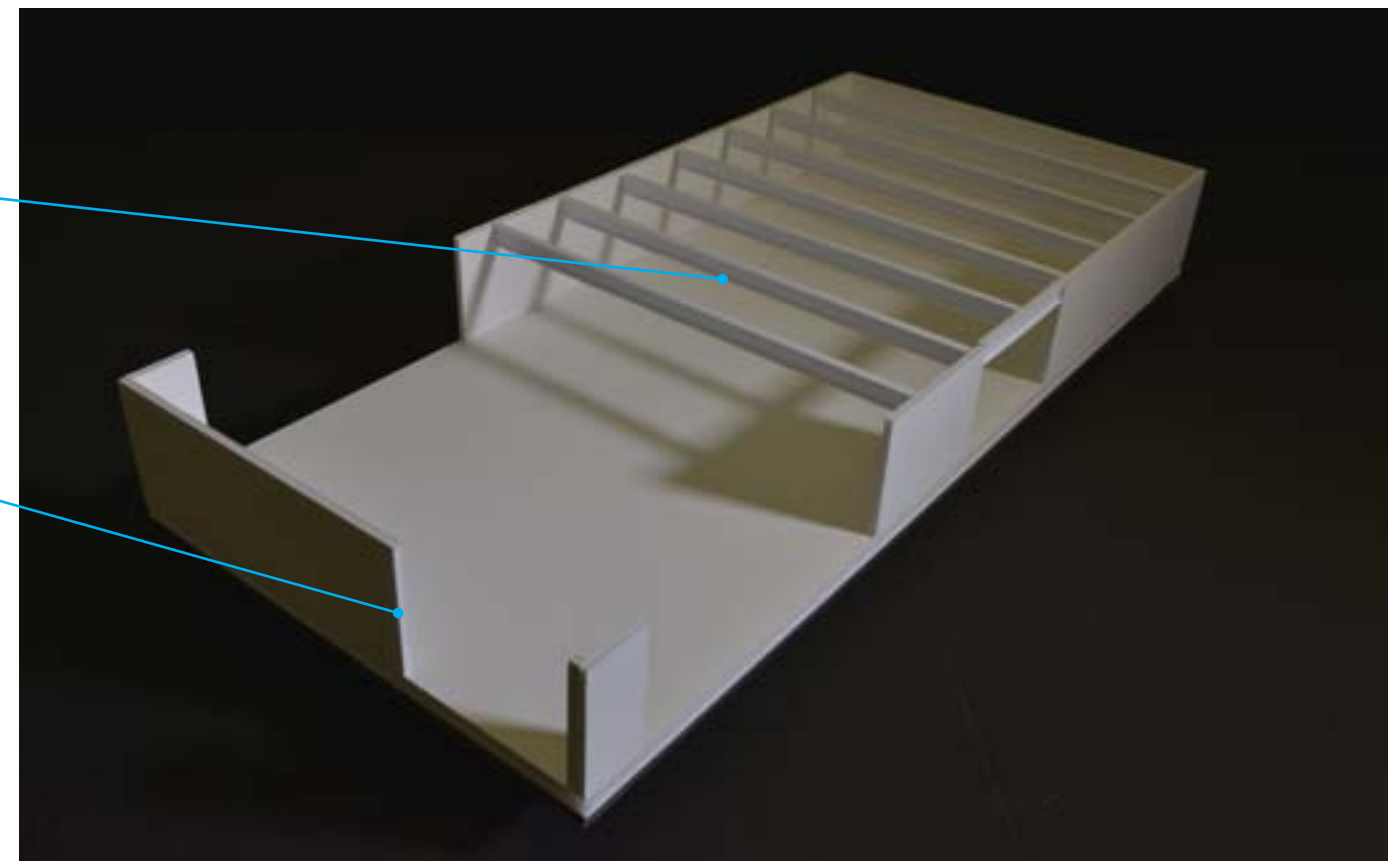
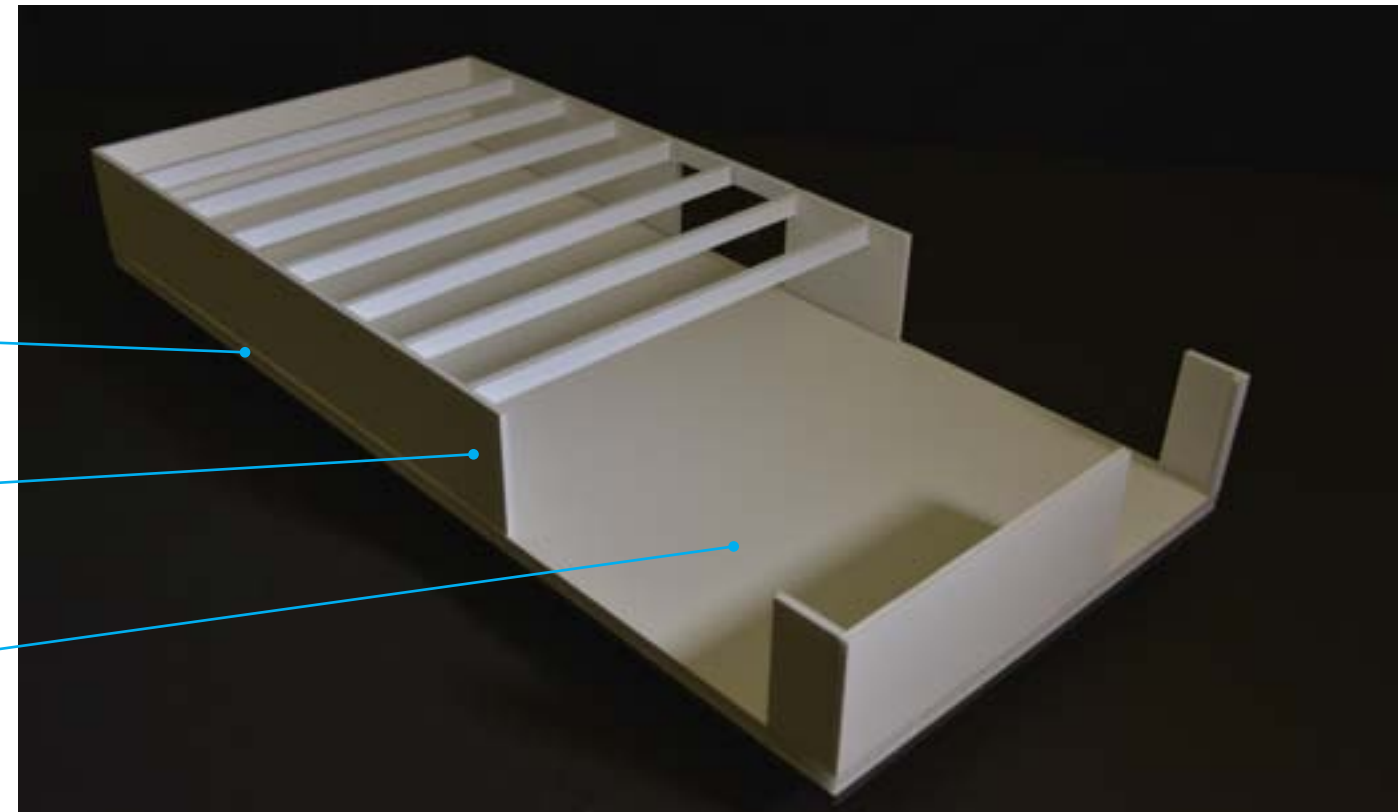
2.5' thick concrete slab - to resist hydrostatic uplift forces

12' high concrete walls extend up to the second floor

First floor elev 13' - eight feet above current grade at elev 5'

Second floor structure carried on exterior concrete bearing walls

Solid floodproof vertical concrete walls - waterproofed to elev 17



## Partial Wall Section

Elev 17' (12' above current grade)

8" concrete wall

Rigid insulation (pink)

Exterior stone cladding

First floor elev 13'

Air space

24" concrete mat slab

3" concrete protection slab

Sidewalk elev 10.5

3" mud slab

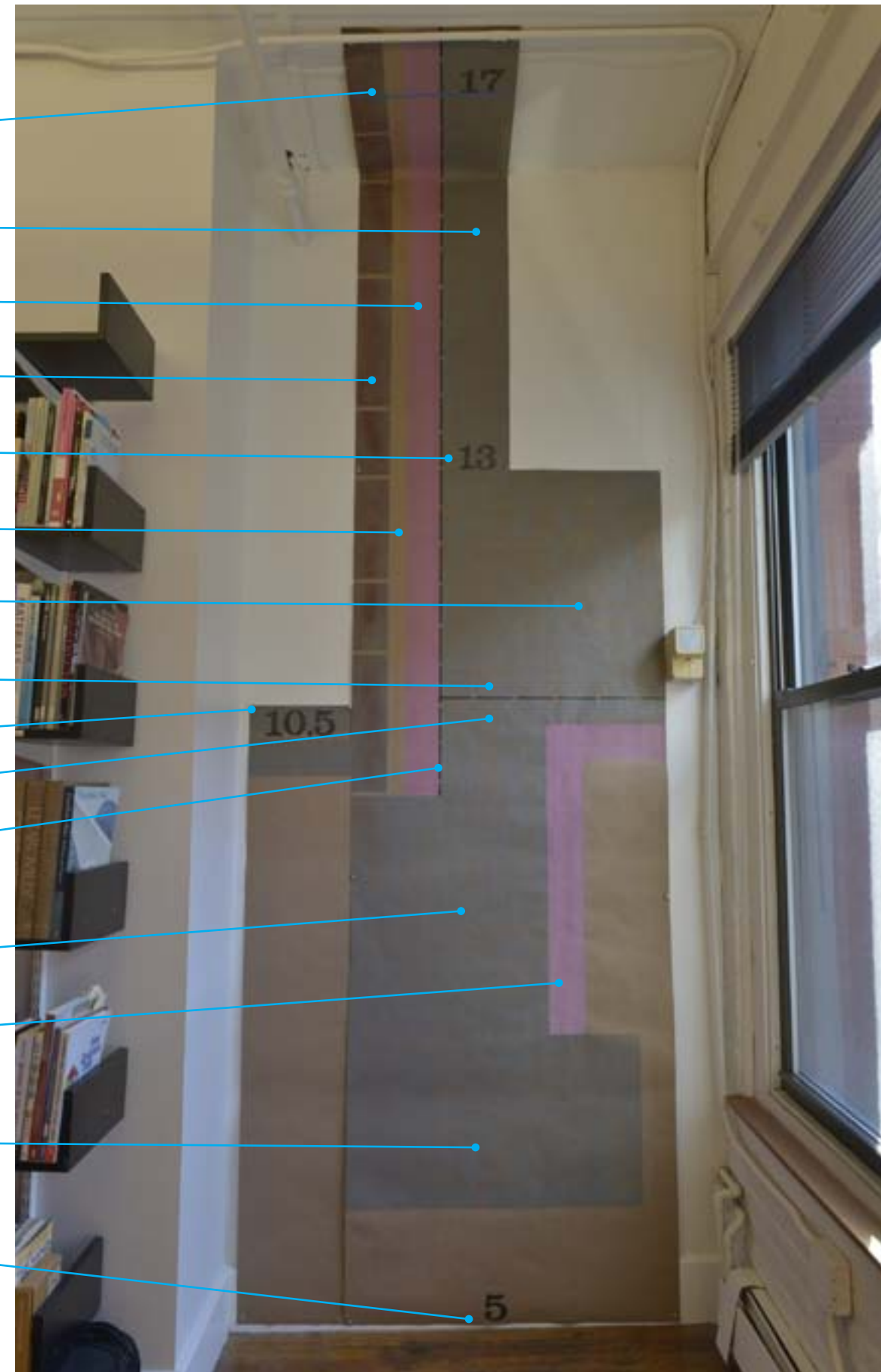
Waterproofing

Concrete foundation wall

Rigid insulation

Concrete footing

Current grade today - elev 5'

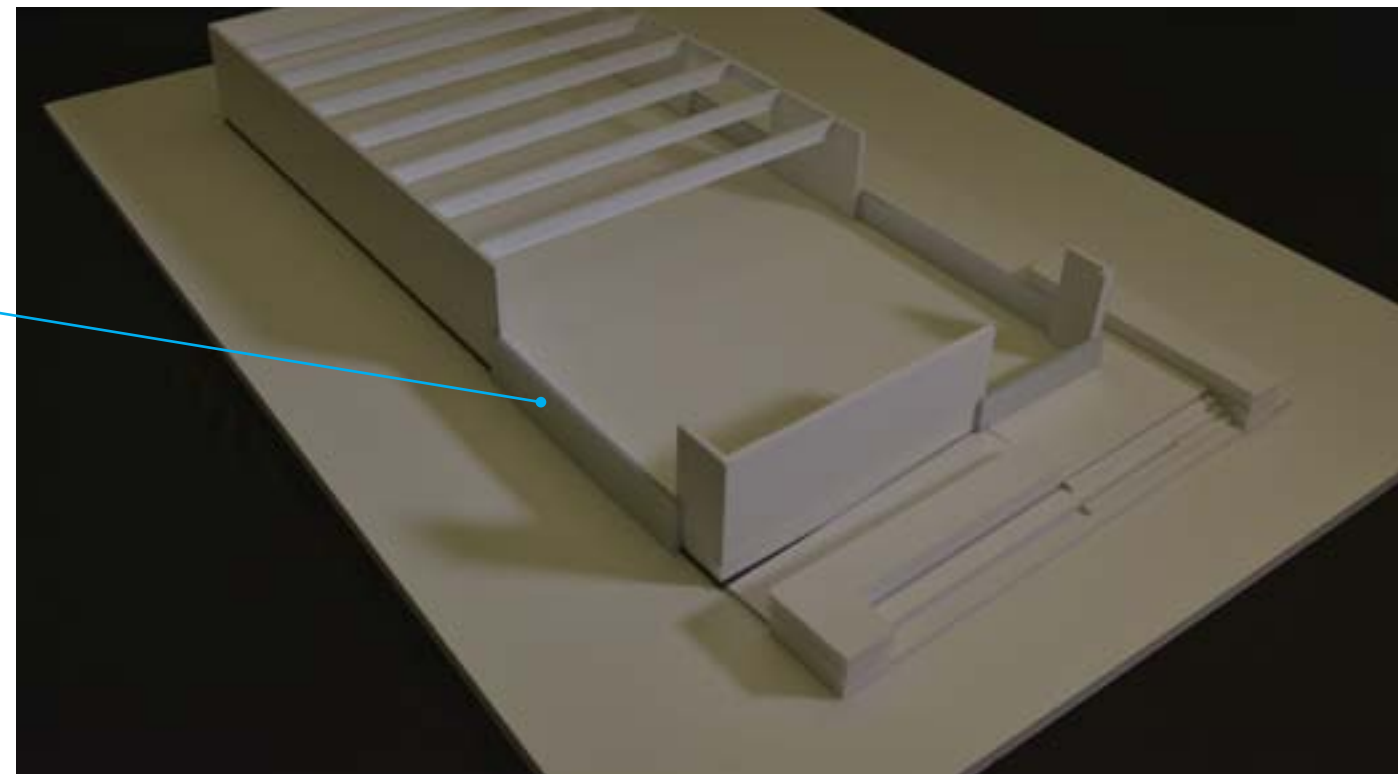
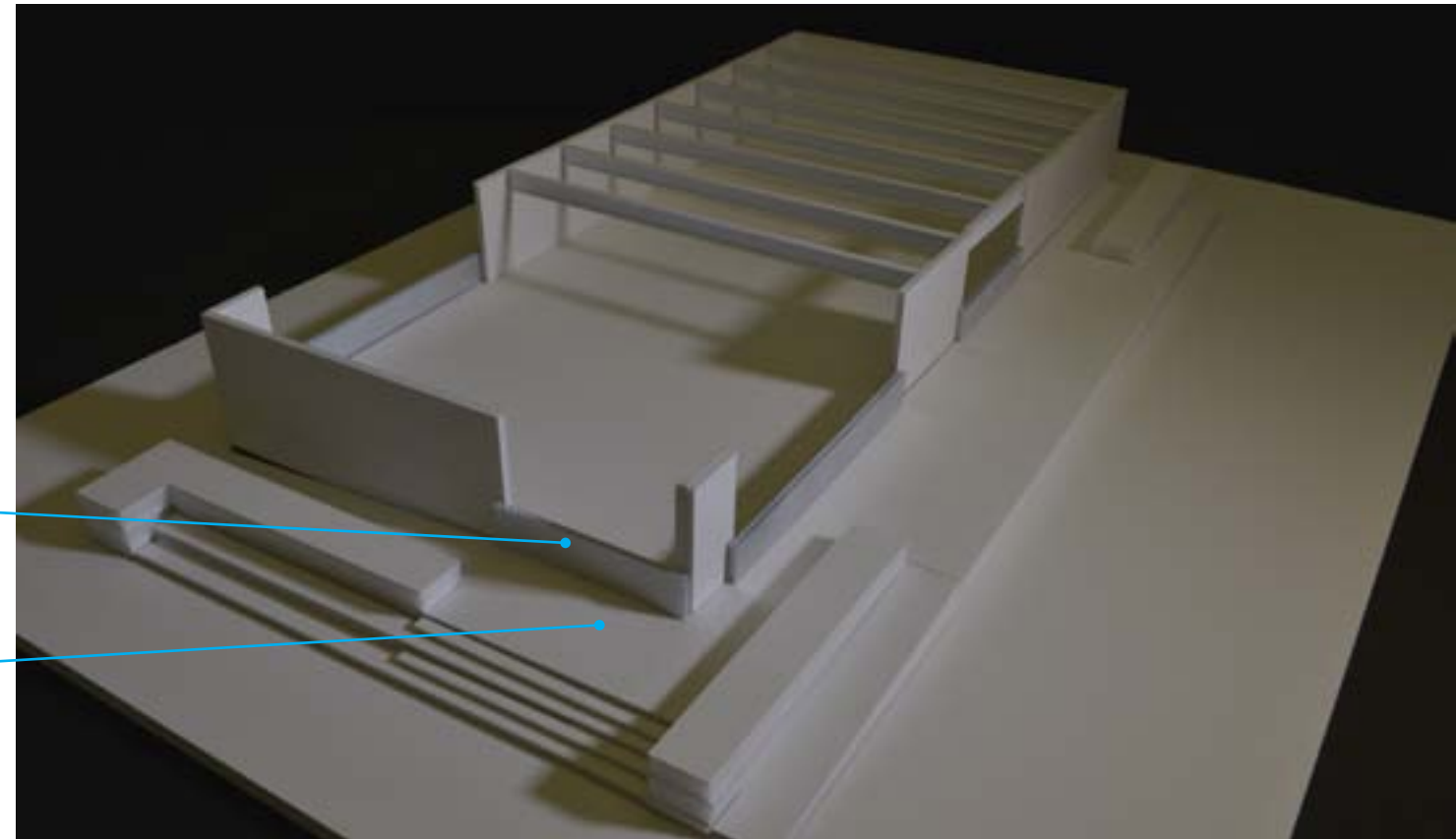


## Structural System - a "boat"

4' high dry floodproofing panels at openings on terrace side

30" elevated terrace

6.5' high dry floodproofing panels on sidewalk side



## Saltbox massing

24" concrete mat slab

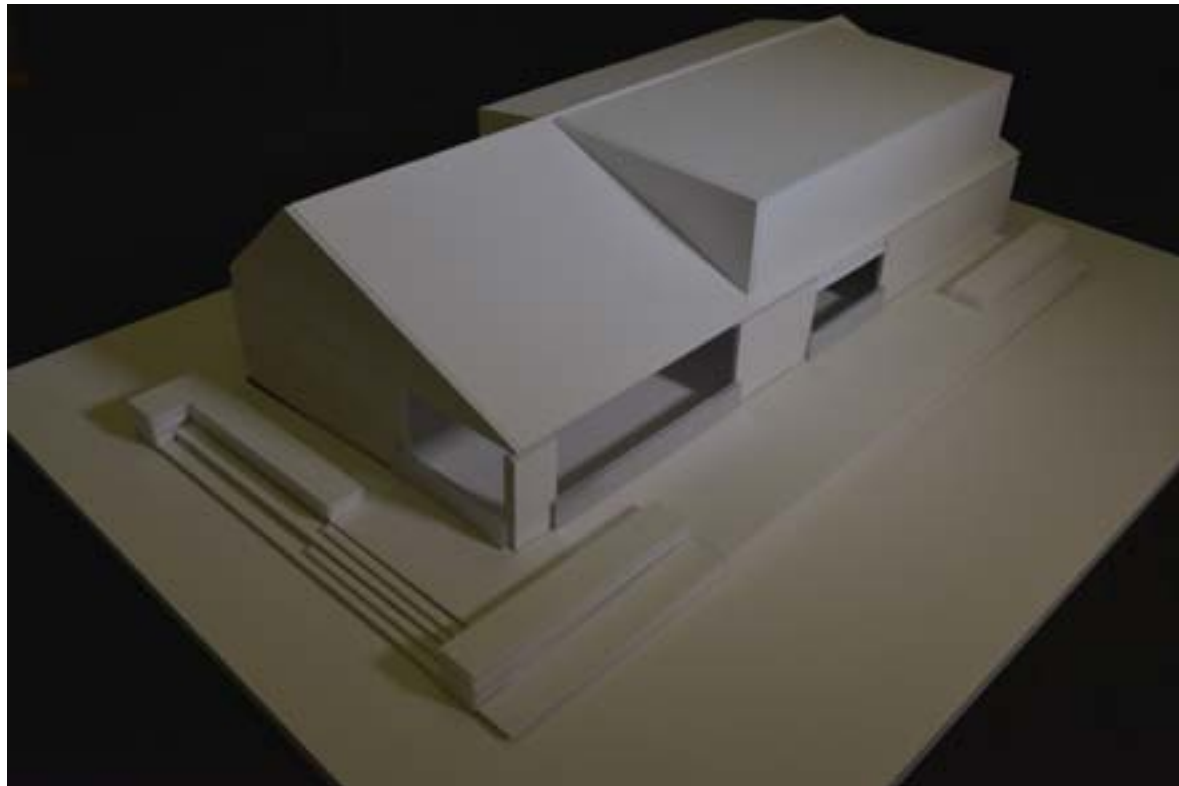
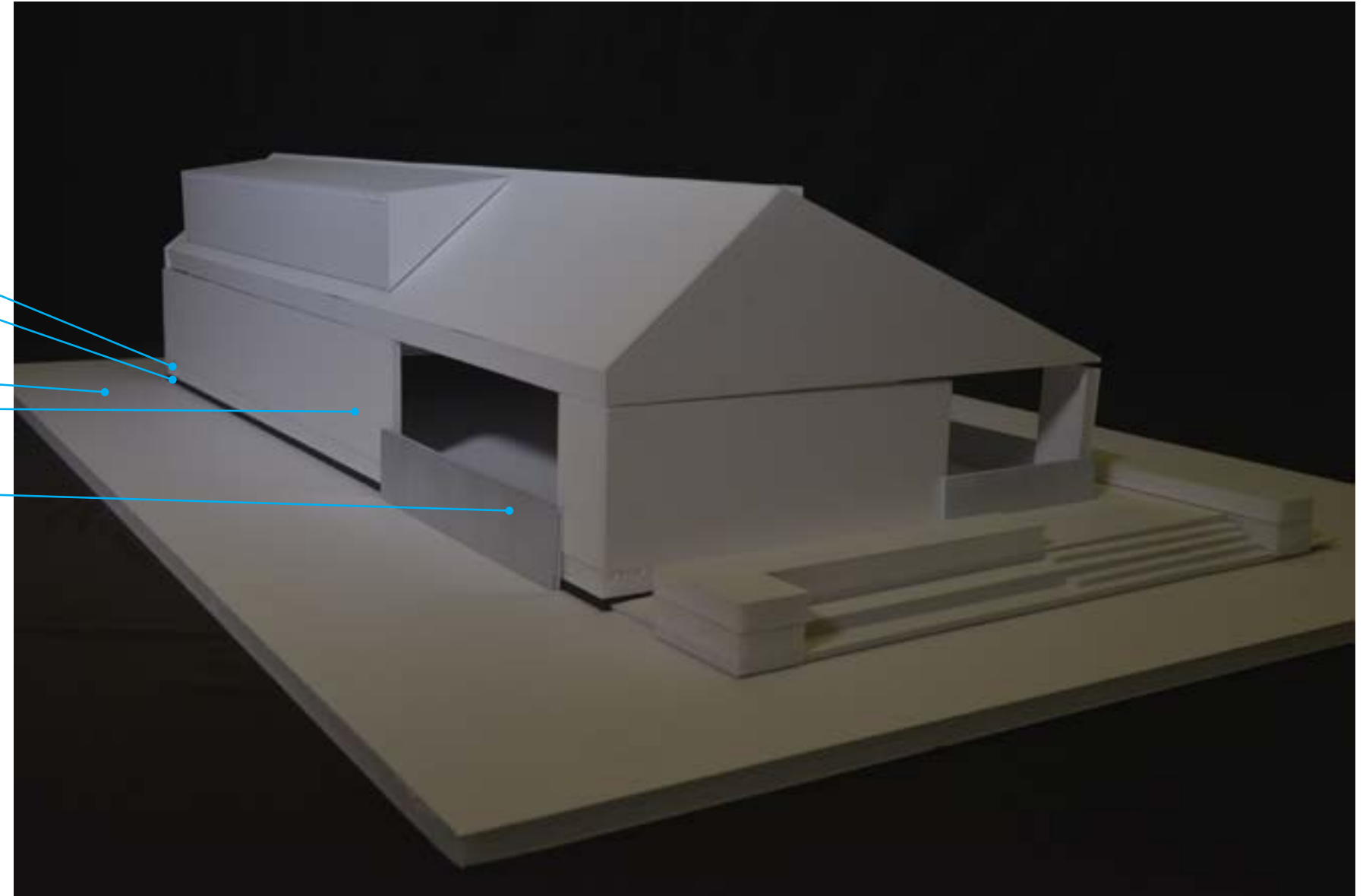
3" concrete protection slab

(+ 3" mud slab)

Sidewalk

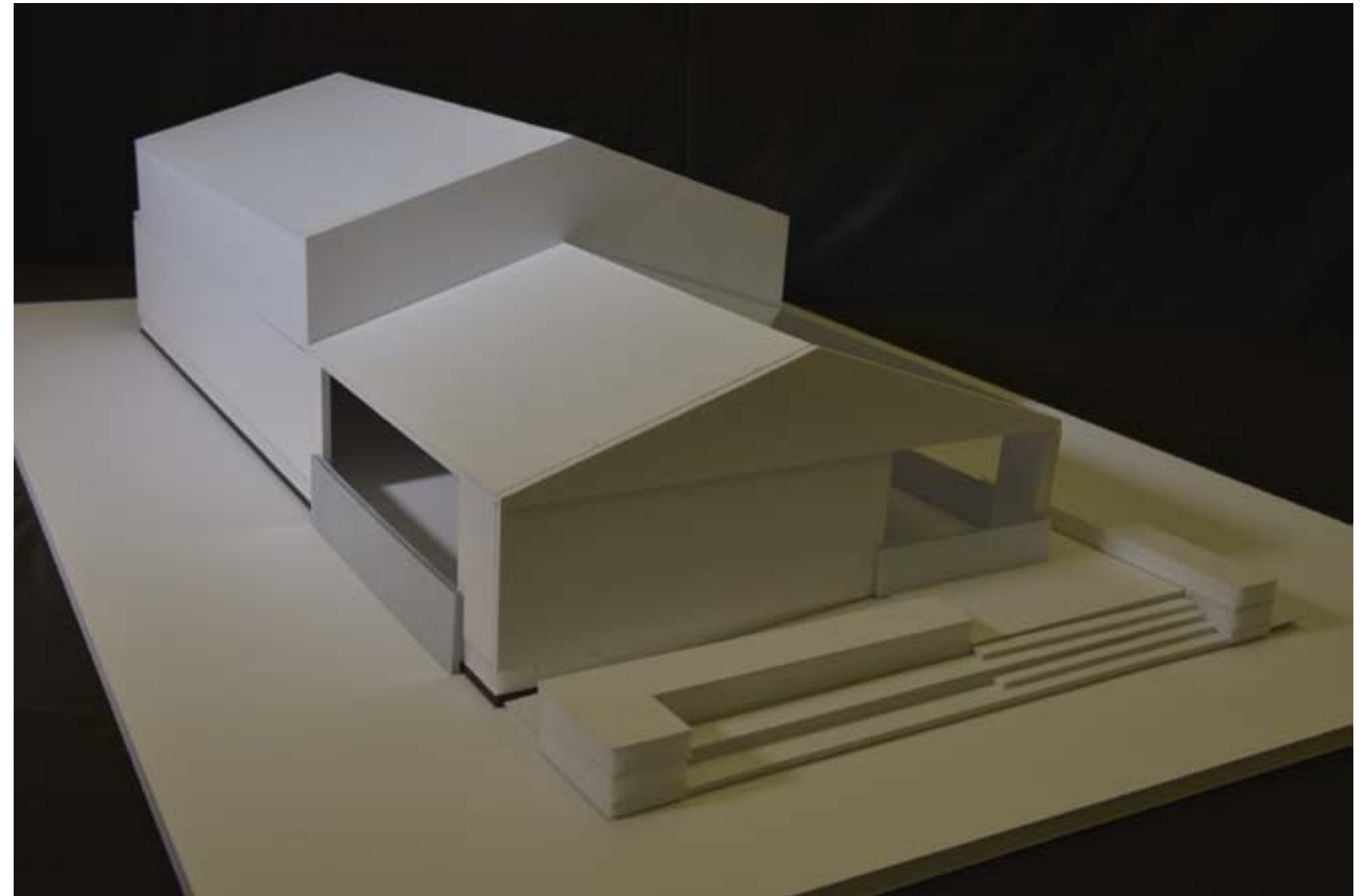
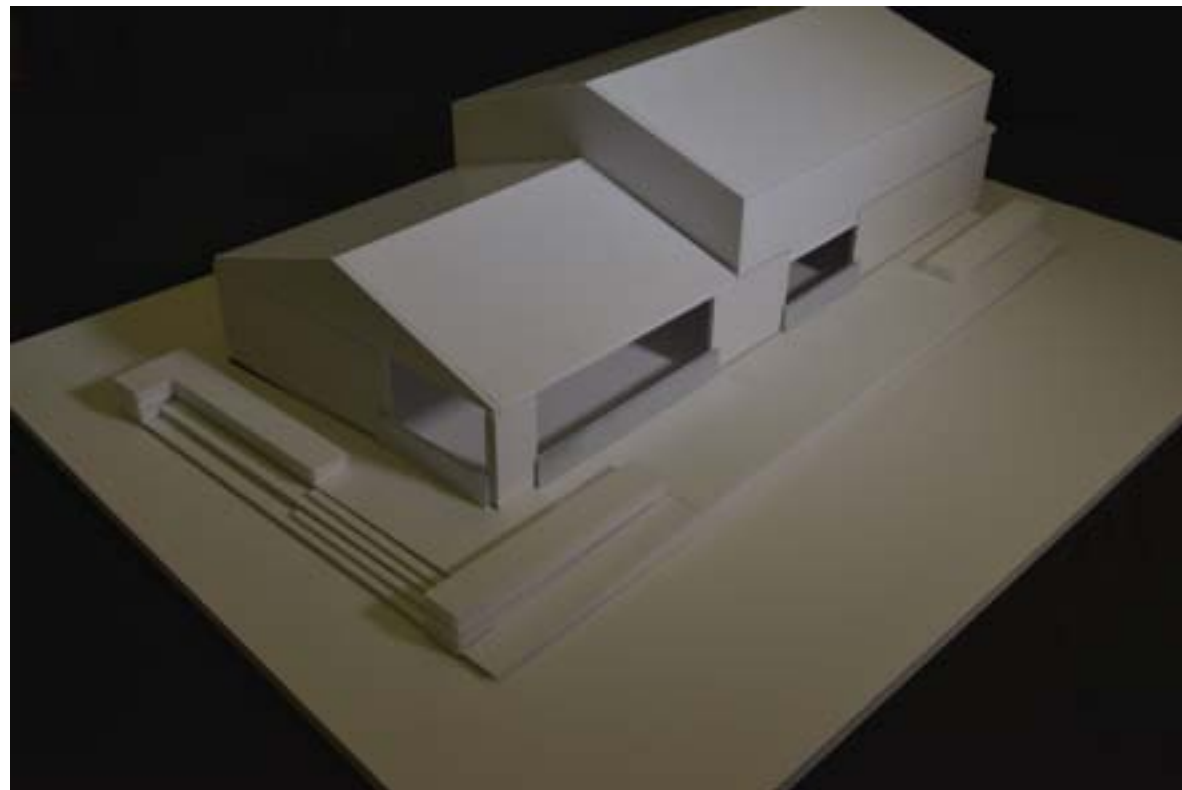
8" concrete wall

6.5' high dry floodproofing panel





## Gable roof massing



### 3 story crossing gable roof massing

